

<b>CONTENTS</b>		<b>PAGE. No.</b>
<b>UNIVERSITY AT A GLANCE</b>		<b>5-11</b>
<b>APPLICATIONS FOR ADMISSION TO FOLLOWING PROGRAMMES</b>		
1. PH.D: THROUGH RESEARCH ENTRANCE TEST (RET) 2022 AND DIRECT ADMISSION (RET-EXEMPTED)		<b>12</b>
2. INTEGRATED M.PHIL.-PH.D. IN (I) ENVIRONMENT & SUSTAINABLE DEVELOPMENT AND (II) INTERDISCIPLINARY SCHOOL OF LIFE SCIENCES THROUGH RESEARCH ENTRANCE TEST (RET) 2022 AND DIRECT ADMISSION (RET-EXEMPTED)		<b>12</b>
3. M.PHIL: THROUGH M.PHIL ENTRANCE TEST 2022		<b>12</b>
<b>A. DISCIPLINES AVAILABLE UNDER VARIOUS FACULTIES FOR ADMISSION TO Ph.D./ VIDYĀVĀRIDHI PROGRAMME</b>		<b>12-14</b>
i) TABLE – 1 (A) - DISCIPLINES IN WHICH PH.D. SCHOLARS WILL BE ENROLLED IN THE UNIVERSITY THROUGH RET AND RET-EXEMPTED CATEGORIES IN THE ACADEMIC SESSION 2022-23	<b>12-13</b>	
ii) TABLE - 1 (B) – DISCIPLINES IN WHICH ADMISSION WILL BE MADE ONLY THROUGH RET CATEGORY IN THE ACADEMIC SESSION 2022-23	<b>13</b>	
iii) TABLE - 1 (C) – DISCIPLINES IN WHICH ADMISSION WILL BE MADE ONLY THROUGH RET – EXEMPTED CATEGORY IN THE ACADEMIC SESSION 2022-23	<b>13</b>	
iv) TABLE – 1 (D) - DISCIPLINES IN WHICH NO ADMISSION WILL BE DONE IN THE ACADEMIC SESSION 2022-23	<b>13-14</b>	
<b>B. MAIN DISCIPLINE – ALLIED DISCIPLINE COMBINATIONS FOR RET and RET (Exempted) CANDIDATES [APPLICABLE FOR PH.D. REGISTRATION ONLY]</b>		<b>14-19</b>
<b>C. MINIMUM ELIGIBILITY REQUIREMENTS FOR QUALIFYING EXAMINATION &amp; PERCENTAGE OF MARKS:</b>		<b>19-23</b>
C.1. ADMISSION TO PH.D. PROGRAMMES	<b>19-21</b>	
CALCULATION OF ACADEMIC RECORD	<b>22-23</b>	
C.2. INTEGRATED M.PHIL-PH.D. PROGRAMME IN FACULTY OF ENVIRONMENT & SUSTAINABLE DEVELOPMENT	<b>23</b>	
C.3. MASTER OF PHILOSOPHY (M.PHIL) PROGRAMME IN SUBALTEN STUDIES	<b>23</b>	
<b>D. RESERVATIONS AND RELAXATIONS</b>		<b>23-26</b>
D.1. SCHEDULED CASTES/SCHEDULED TRIBES	<b>23-24</b>	
D.2. OTHER BACKWARD CLASSES (OBCs)	<b>24</b>	

## RET Information Bulletin 2022

---

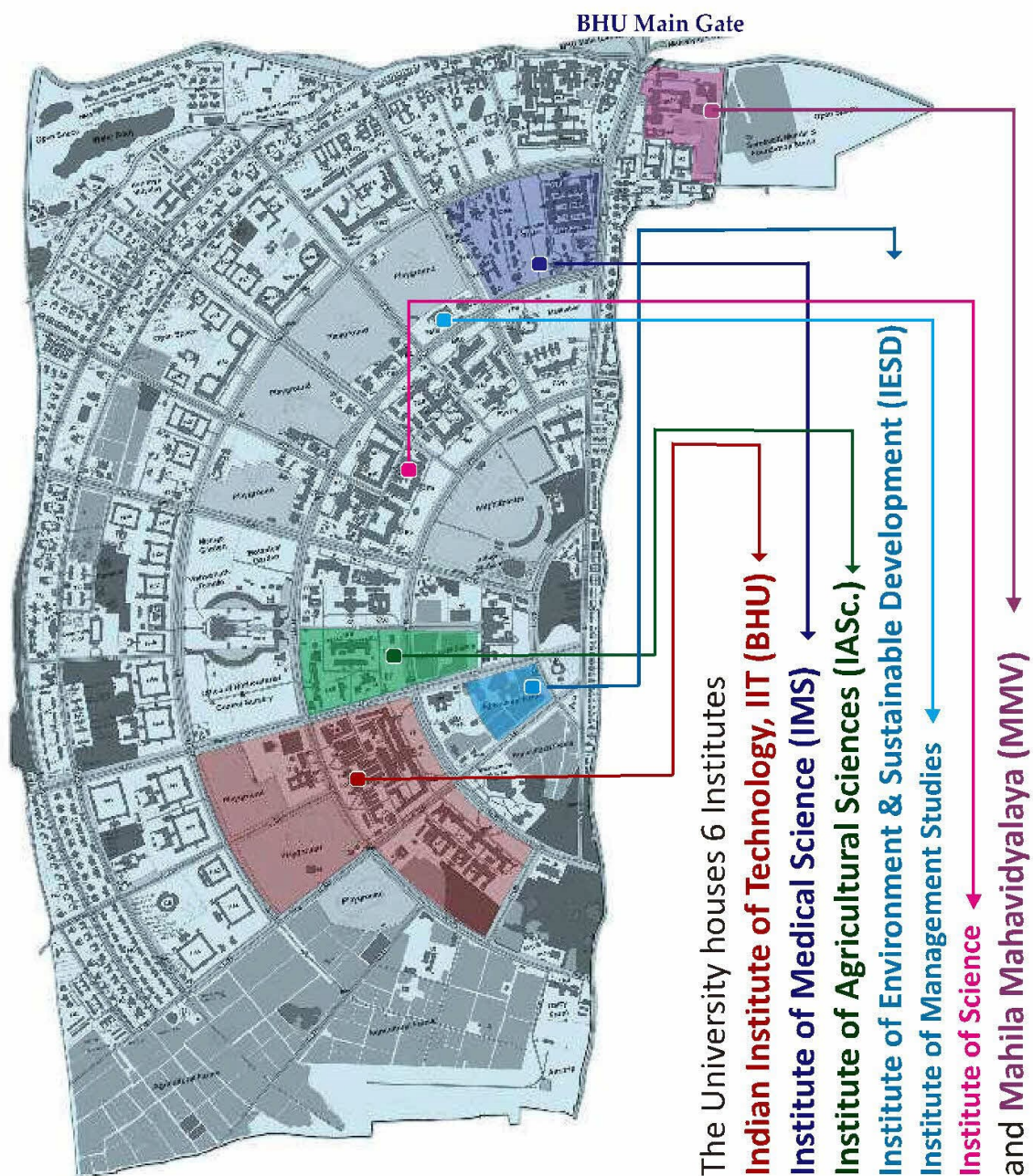
D.3.	ECONOMICALLY WEAKER SECTION (EWS)	24
D.4.	PERSONS WITH DISABILITIES	25
	'SCRIBE' FOR CANDIDATES HAVING BENCHMARK DISABILITY	25-26
D.5.	RELAXATION IN MINIMUM PERCENTAGE OF MARKS/ACADEMIC RECORD FOR SCHEDULED CASTES (SC)/SCHEDULED TRIBES (ST) / PERSONS WITH DISABILITY (PWD) / OTHER BACKWARD CLASSES (OBCs) CANDIDATES	26
D.6.	CONSIDERATION OF RESERVED CATEGORY MERITORIOUS CANDIDATES AS GENERAL CANDIDATES	26
E.	DISCIPLINE NAME, DISCIPLINE CODE NUMBER & MAXIMUM INTAKE	26-30
F.	GENERAL NOTES	30
G.	GENERAL RULES	30-31
H.	DIRECT ADMISSION (WITHOUT APPEARING IN RET, I.E., UNDER RET EXEMPTED CATEGORY; THIS IS APPLICABLE ONLY FOR ADMISSION TO VARIOUS PH.D. PROGRAMMES AND INTEGRATED M.PHIL-PH.D. PROGRAMME)	31-33
I.	STRUCTURE OF RESEARCH ENTRANCE TEST (RET 2022)/ M.PHIL. ENTRANCE TEST 2022	33-34
I.1.	ADMISSION TO PH.D. AND INTEGRATED M.PHIL- PH.D. PROGRAMME	33
I.2.	ADMISSION TO M.PHIL. PROGRAMME IN SUBALTERN STUDIES	33-34
I.3.	GENERAL CONDITIONS FOR RET/M.PHIL. ENTRANCE TEST	34
J.	APPLICATION FORM AND APPLICATION PROCESSING/TEST FEE	34-35
J.1.	ADMISSION TO PH.D. AND INTEGRATED M.PHIL- PH.D. PROGRAMME	34-35
K.	INSTRUCTIONS FOR SUBMISSION OF APPLICATION FORM	35-38
K.1.	ONLINE APPLICATION FORM FOR THE APPLICANTS OF RET/RET-EXEMPTED 2022	35-36
K.2.	ENTRANCE TEST CENTRE	36-38
L.	REASONS FOR REJECTION OF THE APPLICATION FORMS	38
M.	IMPORTANT DATES	38-39
M.1.	SCHEDULE OF ENTRANCE TEST	38
M.1.1.	RET [ADMISSION TO PH.D. PROGRAMMES]	38
M.1.2.	RET [ADMISSION TO INTEGRATED M.PHIL-PH.D. PROGRAMME]	39
M.1.3.	M.PHIL ENTRANCE TEST [FOR ADMISSION TO M.PHIL PROGRAMMES]	39
N.	ADMIT CARD	39

## RET Information Bulletin 2022

---

<b>O. DURATIN OF TEST AND STRUCTURE OF QUESTION PAPER</b>	<b>39</b>
<b>P. METHOD OF ANSWERING IN THE TEST</b>	<b>40-41</b>
<b>P. INSTRUCTION FOR COMPUTER BASED TEST (CBT)</b>	<b>40</b>
<b>P.1. EVALUATION AND RESULT</b>	<b>41</b>
<b>P.2. PROCEDURE FOR CHALLENGING THE QUESTIONS/PROVISIONAL ANSWER KEYS</b>	<b>41</b>
<b>Q. IMPORTANT INSTRUCTIONS TO CANDIDATES APPEARING IN RET/M.Phil. TEST</b>	<b>41-43</b>
<b>R. ADMISSION</b>	<b>43-45</b>
<b>Counselling Procedure on the counselling date</b>	<b>43</b>
<b>R.1.1. ATTENDANCE OF CANDIDATE</b>	<b>43</b>
<b>R.1.2 VERIFICATION OF ACADEMIC RECORDS</b>	<b>43</b>
<b>R.1.3. CONDUCTION OF TEST - B</b>	<b>43-44</b>
<b>R.1.4. FINAL MERIT ORDER AFTER TEST-B</b>	<b>44</b>
<b>R.1.5 ADMISSION PROCESS</b>	<b>44</b>
<b>R.1.5.1. DECLARATION OF RESULT</b>	<b>44</b>
<b>R.1.5.2. ADMISSION, ALLOTMENT OF PH.D. SUPERVISOR AND PAYMENT OF FEE</b>	<b>44-45</b>
<b>R.2. ADMISSION IN INTERGRATED M.PHIL. PROGRAMMES IN ENVIRONMENT AND SUSTAINABLE DEVELOPMENT &amp; LIFE SCIENCES/M.PHIL. PROGRAMME (SUBALTERN STUDIES)</b>	<b>45</b>
<b>S. REGISTRATION OF FOREIGN NATIONALS</b>	<b>45-46</b>
<b>T. FELLOWSHIP</b>	<b>47</b>
<b><u>APPENDIX – 1</u> : LIST OF ALLIED SUBJECTS FOR REGISTRATION IN DIFFERENT DISCIPLINES</b>	<b>48-50</b>

## MAHAMANA'S CAMPUS PLAN AS VISUALIZED IN 1916





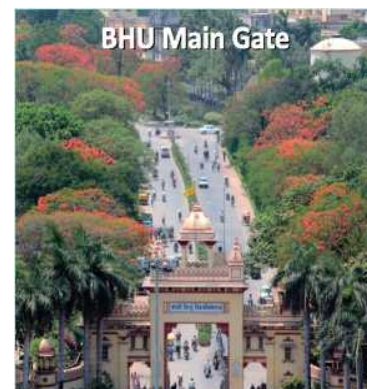


## 1.1 The University at a Glance

The Banaras Hindu University (BHU), founded by Mahamana Pandit Madan Mohan Malaviyaji in 1916, is one of the most prestigious Central Universities in the country. An autonomous institution of distinction and having the Hon'ble President of India as its Visitor, BHU is the largest residential University in Asia. Being a living embodiment of such visionaries as Mahamana Malaviyaji, Dr. Annie Besant and Dr. S. Radhakrishnan, this seat of learning epitomizes a synthesis of ancient wisdom and modern scientific temper. Its holistic model of education, conceived and enriched by its illustrious founder, offers refreshingly new perspectives to young minds and nurtures and facilitates their creative talents.

### The Founder's Vision

- "It is my earnest hope and prayer, that this centre of life and light, which is coming into existence, will produce students who will not only be intellectually equal to the best of their fellow students in other parts of the world, but will also live a noble life, love their country and be loyal to the Supreme Ruler."
- "A teaching university would but half perform its function, if it does not seek to develop the heart power of its scholars with the same solicitude with which it develops their brain power. Hence, this university has placed formation of character in youth as one of its principal objects. It will seek not merely to turn out men as Engineers, Scientists, Doctors, Theologists, Merchants, but also as men of high character, probity and honour, whose conduct through life would show that they bear the hallmark of a great university."



### The University

This university was conceived as a residential university, keeping in view its objective of complete character development and thorough mentoring of students. Perhaps this is the only university in the world where courses ranging from nursery and primary school upto Doctoral/ Post-doctoral degrees are taught and pursued within a walled campus spread over 550 Hectares (1360 acres) and having majestic buildings of great architectural delight. It enshrines within its precincts, a phenomenal range of teaching disciplines incorporating almost all conceivable subjects of Science, Engineering & Technology, Medical Sciences, Humanities, Social Sciences, Commerce, Law, Education, Visual Arts, Performing Arts, Sanskrit Vidya Dharm Vigyan, Agriculture, Veterinary Sciences, Library Science, Journalism and a large number of Indian and Foreign Languages.

There are at present 5 departments receiving support under Special Assistance Programme, 7-UGC-Innovative / TRIEA / Other Programme and 3-DST-FIST (Fund for Improvement of Science & Technology) 4 departments/schools are supported under FIST programme of DST. It also has four colleges admitted to the privileges of the university which are located in the city. The university also runs three schools apart from having a Kendriya Vidyalaya housed in the Campus. In addition, the Rajiv Gandhi South Campus has been established in the year 2006 in a sprawling campus of 1092.6 Hectares (2700 acres) located about 75 kms away from the main campus, at Barkachha in Mirzapur district, Uttar Pradesh.

### Hallmark of Excellence

In NIRF Rankings, Banaras Hindu University has been ranked 3rd among the universities and 10th among higher education institutions in the country for consecutive 5 years.

### Institute of Agricultural Sciences

Committed to the objectives of holistic, sustainable and equitable development of agriculture and allied sciences, aimed at liberty, security and prosperity through competent human resource development by virtue of integrated approach of teaching,

research and extension, determined for creation of knowledge base for the benefit of the farming community, improvement of crops/ vegetables/ fruits/ livestock/ poultry/ fish for enhanced input use efficiency & production, and committed for quality seed production and dissemination of proven technologies towards improving livelihood security and realizing the dream of Hunger Free Society, our achievements in Education (including Sports and Cultural activities) and Research (including Extension activities) justify the funds sanctioned, created and generated from time to time.

### Institute of Medical Sciences & Hospital

The Institute of Medical Sciences comprises three faculties, namely, Faculty of Modern Medicine, Faculty of Ayurveda, and Faculty of Dental Sciences. It offers medical and paramedical courses at undergraduate and postgraduate levels. Through its hospitals, it caters to the clinical needs of more than 20 crores population hailing from 7 states (UP, Bihar, West Bengal, Jharkhand, Odisha, Chhattisgarh and Madhya Pradesh) and neighbouring countries like Nepal and Bhutan. More than 40% of the patients visiting the hospital are from low economic strata. At present, the hospitals have 2614 beds which includes 1385-Bed Sir Sunderlal Hospital; 180-Bed Ayurveda Wing; 334-Bed Trauma Centre; 13-Bed Dental Science; 430-Bed Centenary Super Speciality Block; 100-Bed Mother & Child Health Wing; 60-Bed Centre of Excellence for Mental Health; 12-Bed Bone Marrow Transplant & Stem Cell Research Centre and 100 Bed Regional Institute of Ophthalmology



IIT (BHU)



Institute of Agricultural Sciences



Institute of Medical Sciences



Sir Sunderlal Hospital



Centenary Superspeciality Complex



### Institute of Environment & Sustainable Development

A national-level Institute of Environment & Sustainable Development was established in the year 2010. Recruitment of faculty was done in the year 2011. Using education as a tool to achieve sustainability, the institute aims to cover education for sustainable development. Mission of the Institute is to carry out teaching, research and extension relevant to India's sustainable development leading to the future that ends poverty and delivers and sustains efficient and equitable management of the country's natural resources.



Air Strip

### Institute of Management Studies

The University started Post Graduate and doctoral program in Management in the year 1968 as a Department in the Faculty of Commerce. Envisaging the increasing need for imparting quality management education and research, the University transformed the Department of Management Studies to an independent Faculty of Management Studies in the year 1984. Dedicated efforts were made to run innovative and need based programs for the corporate world under the dynamic leadership of professors of national and international repute. The Faculty has been upgraded to Institute of Management Studies in December 2015.



Cyber Library

### Institute of Science

Established in 1916, the Faculty of Science which later on upgraded to Institute of Science as a constituent institute of the University, offers under graduate and post graduate courses besides offering Ph.D. program and several diploma and certificate courses. The Institute comprises of 13 departments, 6 Centres and 2 Interdisciplinary Schools. Equipped with advanced and sophisticated laboratories and research facilities the institute is marching ahead towards excellence in teaching, learning and research in



Central Library

almost all domains of basic and applied science.

### Largest Residential University in Asia

Over 35,000 students from all over India and abroad are enrolled in various faculties of the university. The university has 72 hostels, having nearly 11000 inmates, with all modern amenities including internet for the students. It also has 1590 staff quarters and 7 guest houses on the campus.



Mahila Mahavidyalaya

### Flying Training to NCC Cadets

The Banaras Hindu University is the only university which has its own airstrip and three helipads, which are used for the training of the NCC Cadets.

### Library

BHU has a Central Library system having more than 15 lacs volumes apart from subscription to more than 15000 online journals, 50000 e-books, databases and a huge collection of digitalized rare manuscripts. It functions in conjunction with a chain of Departmental, Faculty and Institute libraries. In addition, BHU has a fully air-conditioned Cyber Library with a seating capacity of over 200. Newly created air-conditioned Periodical Hall provides 60 cabins for the use of faculty members and research scholars.



Broacha Hostel

### ICT Infrastructure and Automation

The University has WiFi enabled campus. All the academic and administrative offices are WiFi connected. In addition, the University has 100 kilometers long fiber optic backbone of campus wide LAN, connecting all academic and administrative buildings as well as hostels with a well-equipped Computer Centre, providing high end computing and training facilities. The university has been provided three 1 Gbps nodes of National Knowledge Network (NKN) under NME-ICT. Besides these, more than 100 smart classrooms have been augmented for smoothening the online teaching and learning especially during the COVID times. The university has switched over to computer based entrance test and implemented

ERP for executing all administrative and financial work, thereby moving towards paperless office.

### The Temple

The Banaras Hindu University has a temple of Lord Shiva called Shri Vishwanath Temple. It is situated at the centre of the campus. The temple is built with white marble. Its detailed planning was done by Malaviyaji himself. The lush campus of Shri Vishwanath Temple and the beautiful gardens surrounding it are a delight to the eyes of the visitors. The interior of the temple has a Shiva Lingam, and verses from Hindu scriptures are inscribed on the walls of the temple with pictorial depiction.

### Bharat Kala Bhawan

BHU has a museum of international importance - Bharat Kala Bhawan, which is a treasure trove of rare art and artifacts. The Bharat Kala Bhawan has 13 galleries having a collection of more than 1 lakh antique and rare sculptures, miniature paintings, Rajasthani, Mughal and Pahari paintings, coins, jewellery, precious stones, etc. of immense historic value and a very special literary gallery containing manuscripts of famous authors. It also has a rich library containing rare books.

### Rajiv Gandhi South Campus

The Banaras Hindu University has extended its outreach by establishing its South Campus at Barkachha in Mirzapur district. The RGSC is being developed as a potential hub of education, training and entrepreneurship for youth and women, especially those belonging to tribes and weaker sections of the society. The campus is being developed by the University with a mission to enrich the lives of the population of the region by extending to them opportunities to engage in life-long learning and to benefit from the result of research.

### Brand BHU

BHU is the first Central University in India which has implemented a 'Graphic Identity Programme'. Through this programme, BHU has standardized its seal, logo, bilingual logotypes, tagline, colour identity etc. This programme also includes standardization of office stationery and signage system of the campus through its Design Studio, Souvenir shop, Electronic, Web & Social media.

### Major Achievements in Innovation, Research, Education and Infrastructure

- Upgradation of IMS into an AIIMS like institution
- BHU bestowed with the tag of IoE under which BHU will be funded upto Rs.1000 Cr. in coming 5 years
- Establishment of 430-Bed Superspeciality Block equipped with 13 modular OTs, 50 ICUs and 19 CCUs with total outlay of Rs.200 Cr.
- Establishment of 100-Bed Mother and Child Care Wing



Central Discovery Centre



Shri Vishwanath Temple



Bharat Kala Bhawan



South Campus





## RET Information Bulletin 2022

---

- Establishment of Regional Institute of Ophthalmology is at an outlay of Rs.38 Cr.
- Establishment of Bone Marrow Transplant & Stem Cell Research Centre
- Establishment of Mahamana Cancer Hospital and Research Centre with financial support of Tata Trust
- Establishment of Central Discovery Centre (100 Crore) – centralized facility housing state-of-the-art equipment and facilities for research in basic and applied sciences
- Establishment of SATHI Centre (125 Crore) - A major node of a unique interdependent ecosystem for providing centralized facilities, guidance and hand-holding for promoting innovation
- Establishment of an Incubator-Mahamana Foundation for Innovation and Entrepreneurship under the aegis of Atal Incubation Centre of NITIAayog (10Crore)
- Establishment of Vaidik Vigyan Kendra – A centre for conducting research to establish linkage between our ancient wisdom and modern knowledge
- Setting-up Roof Top Solar Power Panels in several buildings in main campus as well as in South Campus
- Construction for two new hostels and three residential quarters complex at South Campus
- Construction of AstroTurf hockey field
- Establishment of Unified Sports Complex having world class sports facilities
- Establishment of Sports Psychology Lab and Resource Room
- Construction of 300 flats for faculty members
- Establishment of Faculty of Veterinary & Animal Sciences at South Campus
- Construction of check dams for water conservation in hilly area at South Campus
- Construction of 110 Room Hostel for international students
- Strengthening of Space Science teaching and research in BHU by ISRO.
- Assistance for creation / seed infrastructure facilities at the Institute of Agricultural Sciences, BHU by ICAR.
- International Chairs in BHU
- UNESCO Chair for Peace & Intercultural Understanding
- Nepal Chair
- Proposed UNICEF Chair for Child Rights
- Bharat Adhyayan Kendra
- Vaidic Vigyan Kendra

### Future Vision

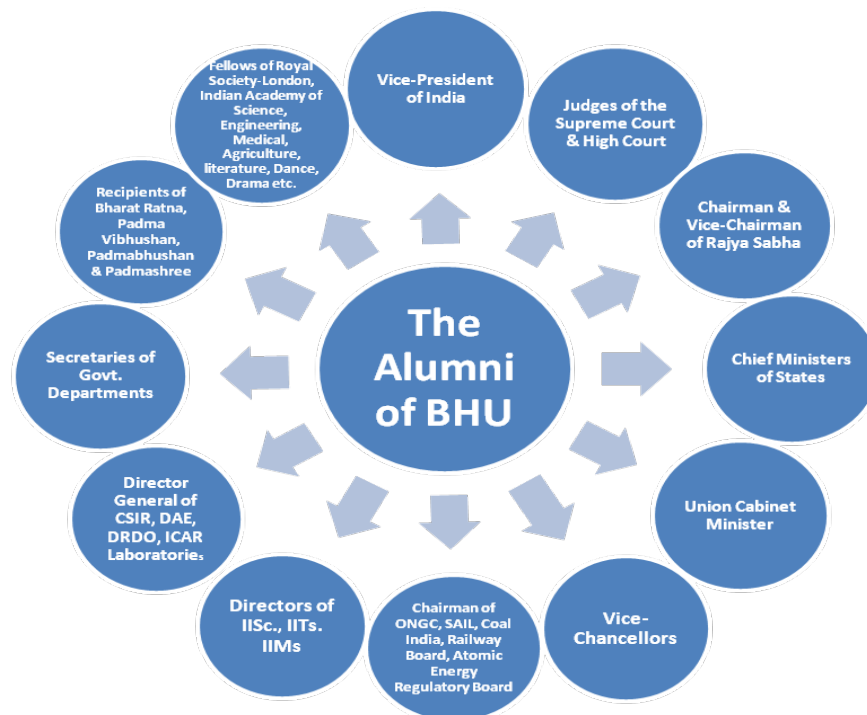
- Institute of Tribal and Genomic Medicine at R.G.S.C.
- Biosafety Level IV (BSL-4) facility for research on highly infectious diseases.
- Centre for Translational Research.
- Centre for Advanced Functional Materials.
- Promotion of Research on Genomics and Proteomics.
- Promotion of Studies on Indian Cultural Heritage.
- Convention Centre of 10000 seating capacity.
- International Hostel with 500 rooms capacity.



Trauma Centre

**BHU Alumni**

Contribution of BHU in extending the frontiers of knowledge in critical areas and in the regeneration and efflorescence of community values is well manifested through its alumni who form a great chain of distinguished personalities throughout the world occupying key positions in varied professional domains.

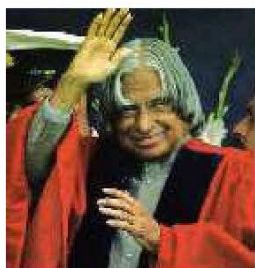


**OUR VICE-CHANCELLORS**

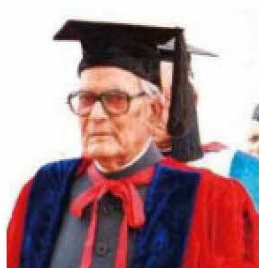
Amongst the Vice-Chancellors who steered this great University are luminaries like Mahamana Malaviyaji, Sir Sunder Lal, Dr. S. Radhakrishnan and Acharya Narendra Dev.

Sir Sunder Lal	(1.4.1916-13.4.1918)	Dr. Hari Narain	(15.5.1978-14.5.1981)
Dr. P. S. Sivaswami Iyer	(13.4.1918-8.5.1919)	Dr. Iqbal Narain	(19.10.1981-29.4.1985)
Pt. Madan Mohan Malaviya	(29.11.1919-6.9.1938)	Dr. R. P. Rastogi	(30.4.1985-29.4.1991)
Dr. Sarvepalli Radhakrishnan	(17.9.1939-16.1.1948)	Dr. C. S. Jha	(1.5.1991-14.6.1993)
Dr. Amar Nath Jha	(27.2.1948-5.12.1948)	Prof. D. N. Mishra	(8.2.1994-27.6.1995)
Pt. Govind Malaviya	(6.12.1948-21.11.1951)	Prof. Hari Gautam	(2.8.1995-25.8.1998)
Acharya Narendra Dev	(6.12.1951-31.5.1954)	Prof. Y. C. Simhadri	(31.8.1998-20.2.2002)
Dr. C.P. Ramaswami Iyer	(1.7.1954-2.7.1956)	Prof. P Ramachandra Rao	(20.2.2002-19.2.2005)
Dr. V.S. Jha	(3.7.1956-16.4.1960)	Prof. Panjab Singh	(03.5.2005-7.5.2008)
Justice N. H. Bhagwati	(16.4.1960-15.4.1966)	Prof. D. P. Singh	(08.5.2008-21.8.2011)
Dr. Triguna Sen	(9.10.1966-15.3.1967)	Dr. Lalji Singh	(22.8.2011-22.8.2014)
Dr. A. C. Joshi	(1.9.1967-31.7.1969)	Prof. G. C. Tripathi	(27.11.2014-27.10.2017)
Dr. K. L. Shrimali	(1.11.1969-31.1.1977)	Prof. Rakesh Bhatnagar	(28.3.2018-28.3.2021)
Dr. Moti Lai Dhar	(02.02.1977-15.12.1997)	Prof. Sudhir K Jain	(07.01.2022 - )

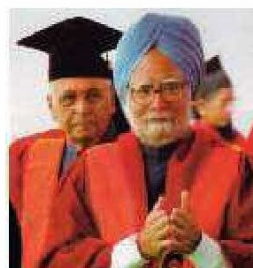
RECENT CONVOCATIONS ADDRESSED BY



88<sup>th</sup> Convocation – 2006  
Hon'ble President of India  
Dr. APJ Abdul Kalam



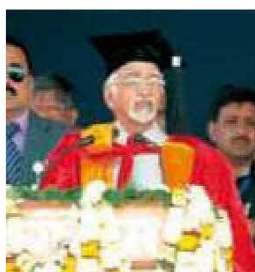
89<sup>th</sup> Convocation – 2007  
Hon'ble Vice-President of India  
Shri Bhairon Singh Shekhawat



90<sup>th</sup> Convocation – 2008  
Hon'ble Prime Minister of India  
Dr. Manmohan Singh



91<sup>st</sup> Convocation – 2009  
Hon'ble President of India  
Smt. Pratibha Devi Singh Patil



92<sup>nd</sup> Convocation – 2010  
Hon'ble Vice-President of India  
Shri Hamid Ansari



93<sup>rd</sup> Convocation – 2011  
Hon'ble Minister of HRD  
Shri Kapil Sibal



94<sup>th</sup> Convocation – 2012  
Hon'ble Speaker of Lok Sabha  
Smt. Meira Kumar



Special Convocation – 2012  
Hon'ble President of India  
Shri Pranab Mukherjee



95<sup>th</sup> Convocation – 2013  
Hon'ble Chancellor of BHU  
Dr. Karan Singh



96<sup>th</sup> Convocation – 2014  
Padma Vibhushan  
Prof. Jayant Vishnu Narlikar



97<sup>th</sup> Convocation – 2015  
Padma Vibhushan  
Dr. G. Madhavan Nair



98<sup>th</sup> Convocation – 2016  
Hon'ble Prime Minister of India  
Shri Narendra Damodar Das Modi



99<sup>th</sup> Convocation – 2017  
Bharat Ratna  
Prof. C.N.R. Rao, FRS



100<sup>th</sup> Convocation – 2018  
Padma Vibhushan  
Dr. Raghunath Anant Mashelkar, FRS





An Institution of National Importance Established by an Act of Parliament

## Information Bulletin

### For admission to Ph.D., Integrated M.Phil.-Ph.D. and M.Phil Programmes (Candidate must ensure that they fulfill minimum essential qualification)

The Banaras Hindu University invites applications for admission to following programmes:

#### 1. Ph.D: Through Research Entrance Test (RET) 2022 and Direct Admission (RET-Exempted)

Doctor of Philosophy/Vidyāvāridhi Degree (herein after referred to as the Ph. D. Degree programme) in various disciplines is given in Section A Table 1(a) (through RET and RET Exempted mode) and Section A Table 1(b) (through RET Exempted mode only) for registration in July 2022 and January 2023 term. Registration of candidates shall be done as per norms decided by the Academic Council of the University from time to time provided that the candidate(s) eligibility conditions should be fulfilled by the last date of online application process. Admission to the said programme shall be (a) through the Research Entrance Test (RET) to be conducted on 25<sup>th</sup> June 2022 and (b) directly for the RET exempted categories (as detailed at Section H of this information bulletin). Eligibility conditions and other details are provided in Section - C.1.

#### 2. Integrated M.Phil.-Ph.D. in (i) Environment & Sustainable Development and through Entrance Test 2022

Admission to Integrated M.Phil.-Ph.D. programme will be done through RET for Integrated M.Phil.-Ph.D. to be conducted on 25<sup>th</sup> June 2022 Eligibility conditions and other details are provided in Section - C.2.

#### 3. M.Phil.: Through M.Phil Entrance Test 2022

Admission for M.Phil in Subaltern Studies, Faculty of Social Sciences will be done for the session 2022-23 through M.Phil 2022 entrance test to be conducted on 25<sup>th</sup> June 2022. Eligibility conditions and other details are provided in Section – C.3.

#### A. DISCIPLINES AVAILABLE UNDER VARIOUS FACULTIES FOR ADMISSION TO Ph.D./ VIDYĀVĀRIDHI PROGRAMME (in the Academic Session 2022-23 [July 2022 and January 2023 term])

##### i) Table - 1 (a) – Disciplines in which Ph.D. Scholars will be enrolled in the University through RET and RET-Exempted categories in the academic session 2022-23:

Sl. No.	Faculty	Main disciplines
1.	Arts	Arabic, Physical Education, Home Science, Mathematics, Statistics, Marathi, Telugu, Purnian, German, Hindi, Prayojan Moolak Hindi,
2.	Ayurveda	Sindhant Darshan, Medicinal Chemistry, Swasthavritta & Yoga, Kaumarbhritya/Balroga, Shalya Tantra, Vikriti Vigyan, Shalakyta Tantra, Prasuti Tantra, Rasa Shastra & Bhaishjya Kalpana, Agad Tantra, Rachana Sharir, Sangyahan, Panchkarma, Kayachikitsa, <b>Samhita &amp; Sanskrit, Kriya Sharir</b>
3.	Commerce	Commerce
4.	Medicine	Anatomy, Cardiothorasis Surgery, Gastroentrolgy, Orthopedics, Otolaryngology (ENT), Radiotherapy & Radiation Medicine,
5.	Dental Sciences	Dental Science
6.	Education	Education
7.	Law	Law, Human Rights & Duties Education
8.	Environment and Sustainable Development	Environmental Science
9.	Science	Physics, Chemistry, Zoology, Geology, Computer Science, Bioinformatics, Home

## RET Information Bulletin 2022

		Science, Mathematics, Statistics
10.	<b>Social Sciences</b>	Economics, Sociology, <b>Political Science</b>
11.	<b>Visual Arts</b>	Applied Arts

ii) Table – 1 (b) – Disciplines in which Ph.D. Scholars will be enrolled in the University through RET only in the academic session 2022-23:

Sl. No.	Faculty	Main disciplines
1.	<b>Arts</b>	Chinese, Library & Information Science
2.	<b>Ayurveda</b>	Dravyaguna
3.	<b>Medicine</b>	Physiology
4.	<b>Sanskrit Vidya Dharma Vigyan</b>	Krishna Yajurveda, Samveda, Rigveda, Dharma Vijnana, Dharmshastra, Mimansa, Puranethihas, Sankhyayoga,

iii) Table - 1 (c) – Disciplines in which admission will be made ONLY through RET-Exempted category in the academic session 2022-23:

Sl. No.	Faculty	Main disciplines
1.	<b>Arts</b>	Bengali, English, French, Nepali, Russian, Geography, Linguistics, Sanskrit, Pali & Buddhist Studies, Journalism & Mass Communication, IPR, Philosophy, Bhojpuri evam Janpadiya Adhyayan, Urdu, <b>Museology, A.I.H.C. &amp; Arch., History of Art</b>
2.	<b>Medicine</b>	Anesthesiology, Biochemistry, Cardiology, General Surgery, Geriatric Medicine, Centre of Experimental Medicine & Surgery, Microbiology, Molecular Biology, Nephrology, Neurology, Medicine, Plastic Surgery
3.	<b>Management Studies</b>	Management Studies
4.	<b>Performing Arts</b>	Instrumental (Sitar), Instrumental (Tabla), Vocal, Dance (Kathak), Dance (Bharat Natyam)
5.	<b>Social Sciences</b>	Psychology, Women's Studies, Peace Research, <b>History</b>
6.	<b>Sanskrit Vidya Dharma Vigyan</b>	Sahitya
7.	<b>Science</b>	Botany, Mathematical Sciences, Biochemistry, Geophysics, Psychology, Geography, Biotechnology, Molecular & Human Genetics, Environmental Science, Applied Microbiology, Human & Clinical Genetic
8.	<b>Visual Arts</b>	Painting, Plastic Arts, Textile Design

**IMPORTANT:**

NET (JRF), NET (LS) and GATE qualified candidates shall be eligible for direct admission (besides other categories of candidates listed at Section H of this information bulletin) without appearing in RET. However, if candidates belonging to NET (LS)/ GATE wish to be considered for BHU research fellowship, they will have to appear in RET and be admitted/ short-listed as RET candidate.

iv) Table - 1 (d) – Disciplines in which NO ADMISSION in Ph.D. WILL BE DONE in the academic session 2022-23:

Sl. No.	Faculty	Main disciplines
1.	<b>Arts</b>	Retail & Logistic Management, Hospitality & Tourism Management, Tourism Management, Tamil, Kannad
2.	<b>Ayurveda</b>	-
3.	<b>Medicine</b>	Biophysics, Dermatology & Venereology (Skin & VD), Forensic Medicine, Endocrinology & Metabolism, Neurosurgery, Obst. & Gynecology, Ophthalmology, Pathology, Pediatrics, Pediatrics Surgery, Pharmacology, Community Medicine, Health Statistics, Radio Diagnosis & Imaging, T.B. & Chest Diseases, Surgical Oncology, Psychiatry, Urology
4.	<b>Performing Arts</b>	Instrumental (Violin), Instrumental (Flute), Musicology
5.	<b>Science</b>	Petroleum Geosciences
6.	<b>Social Sciences</b>	Personal Management & Industrial Relations, Nepal Studies, Subaltern Studies, Social Work, Pt. Deen Dayal Upadhyay Chair, Public Administration
7.	<b>Sanskrit Vidya</b>	Baudha Darshan, Prachin Nyaya

## RET Information Bulletin 2022

	<b>Dharma Vigyan</b>	
8.	<b>Visual Arts</b>	Pottery & Ceramics

### B. MAIN DISCIPLINE – ALLIED DISCIPLINE COMBINATIONS FOR RET and RET (Exempted) CANDIDATES [Applicable for Ph.D. registration only]

To provide an opportunity for inter-disciplinary research a candidate has an option to be admitted to an allied discipline by appearing in the RET of related main discipline. The candidates may opt for maximum five choices of disciplines, including their main discipline. The option/ preference needs to be exercised in the application form. **Integrated M.Phil-Ph.D./ M.Phil. candidate(s) are not required to fill up the preferences.** The details about it are given below:

- i. A candidate shall appear in the RET of the discipline in which he/she has done his/her Post Graduate Course unless otherwise provided in minimum eligibility conditions (**Section C**).
- ii. In such cases, where RET is not conducted in the candidate's discipline at PG level but the said discipline is an "Allied Subject" (*as per list at Appendix I*) to one of the main disciplines in which RET is conducted, he/she shall appear in the RET for the said main discipline.
- iii. Further, in such cases, where RET is not conducted in the candidate's discipline at PG level and the said discipline is an allied subject to more than one main disciplines in which RET is conducted, he/she may opt for RET in a discipline which is closest to his/her P.G. discipline in his/her opinion.
- iv. However, in cases at *para (ii) and para (iii) above*, mobility of candidates to other disciplines would be restricted to only such disciplines where candidate's main discipline (in which the candidate holds the qualifying degree) is an allied subject.
- v. *Further, in a main discipline, the maximum number of admissions that can be given to candidates from allied discipline shall be 20% of the vacancies in the main discipline. However, if in any discipline, the Vacancies are not filled up due to lack of candidates from the main discipline, students from the allied discipline may be admitted.*
- vi. *Candidates possessing their PG Degrees in such disciplines in which RET is not being conducted during the academic session 2022-23 {as listed in Table 1(c) and 1(d)}, may appear in the RET of any one of the allied disciplines mentioned against their main discipline at Table in section B. However, their selection will be restricted to 20% limit on admitting candidates (from allied disciplines) to only such disciplines where candidate's main discipline (in which the candidate holds the qualifying degree) is an allied subject.*
- vii. List of allied disciplines corresponding to a main discipline in which the candidate is eligible for admission by virtue of appearing in the RET of the main discipline is given below:

**IMPORTANT: The candidate seeking admission through RET should not select the disciplines specified in Table 1 (c) and Table 1 (d) as their preference of allied disciplines/Main discipline in the table given below.**

Main Discipline in which candidate appears for the RET	Allied Disciplines in which candidate is eligible for admission besides Main Discipline
<b>FACULTY OF ARTS</b>	
Arabic	-
Bengali	Marathi, Indian Languages (Nepali)
English	Chinese, Russian, , Indian Languages (Kannada), Linguistics, <b>Indian Languages (Tamil)</b>
Chinese	-
French	Chinese, Russian
German	-
Russian	-
Marathi	Indian Languages (Nepali), Indian Languages (Kannada), Indian Languages (Tamil)
Indian Languages (Nepali)	Marathi, Indian Languages (Tamil)
Indian Languages (Kannada)	-
Indian Languages (Tamil)	Marathi, Indian Languages (Nepali)
Hindi	Chinese, Russian, Marathi,
Prayojan Moolak Hindi	-
Linguistics	Chinese, Russian, English,
Pali & Buddhist Studies	Chinese, Russian, Indian Languages (Kannada)
Persian	-
Sanskrit	Indian Languages (Nepali), Indian Languages (Kannada), Pali & Buddhist Studies, Dharmashastra, Jain Darshan, Bauddha Darshan, Dharma Vijnan, Agam Tantra, Vedanta,



## RET Information Bulletin 2022

Main Discipline in which candidate appears for the RET	Allied Disciplines in which candidate is eligible for admission besides Main Discipline
	Nyaya Vaisheshika, Sankhyoga, Puranetihas, Prachin Nyaya, Samhita & Sanskrita, Vikriti Vigyana, Siddhanta Darshan, <a href="#">Indian Languages (Tamil)</a>
Urdu	-
Ancient Indian History, Culture & Archaeology	Pali & Buddhist Studies, Neurology, Puranetihas
History of Art	Tourism Management, Applied Arts, Pottery & Ceramics, Textile Design, Painting
Tourism Management	History of Art
Indian Philosophy & Religion	Philosophy
Philosophy	Indian Languages (Nepali), Indian Languages (Kannada), Pali & Buddhist Studies, Indian Philosophy & Religion, Vedanta, Sankhyoga, Nyaya Vaishishakya, Prachin Nyaya, Nyaya Vaisheshika
Journalism and Mass Communication	-
Telugu	Marathi, <a href="#">Indian Languages (Tamil)</a>
Library & Information Science	-
Museology	-
Physical Education	Physiology, Kriya Sharira, Rachana Sharira, Swasthavritta & Yoga, Vikriti Vigyana, Panchakarma, Kayachikitsa
Mathematics	Physics, Mathematical Science
Geography	Rasa Shastra & Bhaishjya Kalpana
Statistics	Economics, Mathematics, Mathematical Science
Home Science	Anatomy (Food and Nutrition), Community Medicine, Prasuti Tantra (Nutrition), Rasa Shastra & Bhaishjya Kalpana, Shalya Tantra, <b>Kriya Sharira<sup>§</sup></b> , Rachana Sharira, Swasthavritta & Yoga, Kaumarbhritya/Balroga, Vikriti Vigyana, Panchakarma, Dravyaguna, Kayachikitsa <b><sup>§</sup>M.Sc. students only</b>
<b>FACULTY OF PERFORMING ARTS</b>	
Instrumental Music (Sitar, Violin, Flute, Tabla)	Vocal Music, Dance (Bharat Natayam, Kathak), Musicology, History of Art
Vocal Music	Instrumental Music (Sitar, Violin, Flute, Tabla), Dance (Bharat Natayam, Kathak), Musicology, History of Art
Dance (Bharat Natayam, Kathak)	Instrumental Music (Sitar, Violin, Flute, Tabla), Vocal Music, Musicology, History of Art
Musicology	Instrumental Music (Sitar, Violin, Flute, Tabla), Vocal Music, Dance (Bharat Natayam, Kathak), History of Art
<b>FACULTY OF SOCIAL SCIENCES</b>	
Economics	Education, Commerce, Geography, Women's Studies, Peace Research
History	Women's Studies, Peace Research
Political Science	Human Rights & Duties Education, Women's Studies, Peace Research
Psychology	Linguistics, Cardiology, Pediatrics, Physiology, Community Medicine, Radiotherapy & Radiation Medicine, <b>Kriya Sharira<sup>§</sup></b> , Swasthavritta & Yoga, Kaumarbhritya/Balroga, Geriatric Medicine, Women's Studies, Kayachikitsa, Rachana Sharira, Peace Research* *denotes Social Sciences and Science, <b><sup>§</sup>M.Sc. students only</b>
Sociology	Education, Law, Community Medicine, Radiotherapy & Radiation Medicine, Kriya Sharira, Swasthavritta & Yoga, Women's Studies, Kayachikitsa, Rachana Sharira, Peace Research
Social Work	Community Medicine, Psychiatry, Sociology, Siddhanta Darshan, Panchakarma,
Personnel Management & Industrial Relations	Psychology
Subaltern Studies	Law
Women's Studies	English
Peace Research	Law, Kāyachikitsā
Public Administration	-
<b>FACULTY OF SANSKRIT VIDYA DHARM VIGYAN SANKAYA</b>	

## RET Information Bulletin 2022

Main Discipline in which candidate appears for the RET	Allied Disciplines in which candidate is eligible for admission besides Main Discipline
Veda (Shukla Yajurveda Krishna Yajurveda, Samveda, Rigveda)	Dharmashastra, Mimansa, Dharm Vijnan, Agam Trantra, Kaumarbhritya/Balroga,
Vyakaran	Mimansa, Dharm Vijnan, Agam Trantra
Jyotish (Jyotish Ganit, Jyotish Falit)	Dharma Shastra, Siddhanta Darshan,
Dharma Shastra	Veda, Vyakaran, Mimansa, Jyotish
Mimansa	Veda, Vyakaran, Dharma Shastra
Sahitya	Dharma Shastra
Jain Darshan	-
Bauddh Darshan	-
Dharm Vijnan	Veda, Agam Trantra
Agam Tantra	Veda, Dharm Vijnan
Vedanta	Puranetihas, Prachin Nyaya, Mimansa, Dharm Vijnan, Sankhyayoga
Sankhyayoga	Veda, Vedanta, Nyaya Vaisheshika, Puranetihas, Prachin Nyaya, Jyotish
Nyaya Vaisheshika	Vyakaran, Mimansa, Vedanta, Sankhyayoga, Puranetihas, Prachin Nyaya
Prachin Nyaya	-
Puranetihas	Vedanta, Sankhyayoga, Nyaya Vaisheshika, Jyotish, Prachin Nyaya
<b>FACULTY OF SCIENCE</b>	
Biochemistry	Biotechnology, Botany, Molecular and Human Genetics, Zoology, Applied Microbiology, Environmental Science, Human and Clinical Genetics (in Centre for Genetic Disorders), Anatomy, Biophysics, Cardiology, Cardiothoracic Surgery, Endocrinology & Metabolism, General Surgery, Molecular Biology, Nephrology, Anesthesiology, Medicine, Pediatric Surgery, Pharmacology, Radio - Diagnosis & Imaging, Vikriti Vigyana, Medicinal Chemistry, Gastroenterology, Dravyaguna, Shalya Tantra
Biotechnology	Biochemistry, Molecular and Human Genetics, Human and Clinical Genetics (in Centre for Genetic Disorders), Anatomy, Biophysics, General Surgery, Molecular Biology, Nephrology, Neurology, Botany, Zoology, Applied Microbiology, Environmental Science, Medicine, Pediatric Surgery, Pharmacology, Urology, Prasuti Tantra, Rasa Shastra & Bhaishjya Kalpana, Kaumarbhritya/Balroga, Biochemistry (IMS), Microbiology, Gastroenterology, Dravyaguna, Medicinal Chemistry
Botany	Biochemistry, Biotechnology, Applied Microbiology, Environmental Science, Gastroenterology, Agadh Tantra
Chemistry	Biochemistry, Physics, Radio - Diagnosis & Imaging, Medicinal Chemistry, Sangyahan
Computer Science	Linguistics, Library & Information Science, Mathematical Sciences, Radio - Diagnosis & Imaging
Geography	Rasa Shastra & Bhaishjya Kalpana
Geology	Geophysics, Geography
Petroleum Geosciences	Geology,
Geophysics	Geology, Geography
Home Science	Anatomy, Community Medicine, Prasuti Tantra (Nutrition), Rasa Shastra & Bhaishjya Kalpana, Shalya Tantra, Kriya Sharira, Rachana Sharira, Swasthavritta & Yoga, Kaumarbhritya/Balroga, Vikriti Vigyana, Panchakarma, Dravyaguna * denotes Food and Nutrition, Kayachikitsa
Mathematics	Geophysics, Mathematical Sciences, Physics,
Molecular and Human Genetics	Biochemistry, Applied Microbiology, Human and Clinical Genetics (in Centre for Genetic Disorders), Biophysics, General Surgery, Molecular Biology, Nephrology, Pathology, Urology, Biochemistry (IMS),
Physics	Geophysics, Bio-Informatics, Radiotherapy & Radiation Medicine
Psychology	Linguistics, Cardiology, Geriatric Medicine, Pediatrics, Physiology, Community Medicine, Radiotherapy & Radiation Medicine, Kriya Sharira, Swasthavritta & Yoga, Kaumarbhritya/Balroga, Geriatric Medicine, Prasuti Tantra, Kayachikitsa, Rachana Sharira,
Statistics	Economics, Mathematics, Mathematical Science
Zoology	Biochemistry, Biotechnology, Molecular and Human Genetics, Human and Clinical Genetics

## RET Information Bulletin 2022

Main Discipline in which candidate appears for the RET	Allied Disciplines in which candidate is eligible for admission besides Main Discipline
	(in Centre for Genetic Disorders), Anatomy, Dermatology & Venereology, Endocrinology & Metabolism, Microbiology, Molecular Biology, Neurology, Cardiology, Medicine, Physiology, Rachana Sharira, Gastroenterology, Obstetrics & Gynecology, Dravyaguna
<b>Applied Microbiology</b>	Biotechnology, Botany, Environmental Science, Medicine,
<b>Environmental Science</b>	Economics, Botany, Geology, Geography, Geophysics, Applied Microbiology, Agad Tantra,
<b>Bio-Informatics</b>	Medicinal Chemistry, Biotechnology
<b>Mathematical Sciences</b>	-
<b>Human and Clinical Genetics (in Centre for Genetic Disorders)</b>	Cardiothoracic Surgery, Medicine, Molecular and Human Genetics
<b>FACULTY OF MEDICINE</b>	
<b>Anatomy</b>	Pediatric Surgery
<b>Anesthesiology</b>	Orthopedics
<b>Biochemistry</b>	Anatomy, Biophysics, Cardiology, Cardiothoracic Surgery, Endocrinology & Metabolism, Shalya Tantra, General Surgery, Molecular Biology, Nephrology, Anesthesiology, Pediatric Surgery, Pharmacology, Radio - Diagnosis & Imaging, Medicinal Chemistry
<b>Biophysics</b>	-
<b>Cardiology</b>	-
<b>Cardiothoracic Surgery</b>	-
<b>Dermatology &amp; Venereology</b>	-
<b>Endocrinology &amp; Metabolism</b>	Human and Clinical Genetics (in Centre for Genetic Disorders), Ophthalmology
<b>Forensic Medicine</b>	Law, Pathology,
<b>General Surgery</b>	Dermatology & Venereology, Law, Pediatric Surgery, Plastic Surgery, Shalya Tantra
<b>Medicine</b>	Dermatology & Venereology, Endocrinology & Metabolism, Pathology, T.B. & Chest Diseases, Ophthalmology
<b>Geriatric Medicine</b>	-
<b>Microbiology</b>	Anesthesiology, Dermatology & Venereology, Nephrology, Anatomy, Medicine, Pathology, Pharmacology, Plastic Surgery, T.B. & Chest Diseases, Urology, Prasuti Tantra, Medicinal Chemistry, Dairy Technology, Gastroenterology
<b>Molecular Biology</b>	Human and Clinical Genetics (in Centre for Genetic Disorders), Biophysics, Cardiology, , Pathology, Molecular and Human Genetics
<b>Nephrology</b>	-
<b>Neurology</b>	Neuro Surgery, Orthopedics, Plastic Surgery, Urology, Ophthalmology
<b>Neuro Surgery</b>	-
<b>Obstetrics &amp; Gynecology</b>	-
<b>Ophthalmology</b>	Neuro Surgery, Shalaky Tantra
<b>Orthopedics</b>	Plastic Surgery
<b>Otolaryngology (E.N.T.)</b>	Plastic Surgery, Shalaky Tantra
<b>Pathology</b>	Dermatology & Venereology, , Neuro Surgery, Endocrinology & Metabolism, T.B. & Chest Diseases, Urology, Ophthalmology
<b>Pediatrics</b>	Neuro Surgery, T.B. & Chest Diseases, Ophthalmology
<b>Pediatric Surgery</b>	-
<b>Pharmacology</b>	Anesthesiology, Cardiothoracic Surgery, Obstetrics & Gynecology, Endocrinology & Metabolism
<b>Physiology</b>	Anesthesiology, Biophysics
<b>Plastic Surgery</b>	Orthopedics
<b>Community Medicine</b>	T.B. & Chest Diseases, Ophthalmology
<b>Health Statistics</b>	-
<b>Psychiatry</b>	Anesthesiology, Obstetrics & Gynecology
<b>Radio - Diagnosis &amp; Imaging</b>	-
<b>Radiotherapy &amp; Radiation Medicine</b>	Neuro Surgery
<b>Surgical Oncology</b>	Orthopedics
<b>T.B. &amp; Chest Diseases</b>	-
<b>Urology</b>	-
<b>FACULTY OF DENTAL SCIENCES</b>	



## RET Information Bulletin 2022

Main Discipline in which candidate appears for the RET	Allied Disciplines in which candidate is eligible for admission besides Main Discipline
Dental Sciences	Shalaky Tantra
<b>FACULTY OF AYURVEDA</b>	
Siddhanta Darshan	Samhita & Sanskrita, Shalya Tantra,
Samhita & Sanskrita	Vedanta, Sankhyayoga, Puranetihasa, Siddhanta Darshan
Prasūti Tantra	Shalya Tantra, Sangyahan
Dravyaguna	Pharmacology
Rasa Shastra & Bhaishjya Kalpana	-
Medicinal Chemistry	-
Shalya Tantra	Shalaky Tantra
Shalaky Tantra	-
Kayachikitsa	Neurology, Jyotish
Kriya Sharira	Education, Samhita & Sanskrita, Prasuti Trantra, Sangyahan
Rachana Sharira	Education, Painting, Prasuti Trantra
Swasthavritta & Yoga	Samhita & Sanskrita, Nyaya Vaisheshika
Kaumarbhritya/Balroga	-
Vikriti Vigyana	-
Sangyahan	-
Panchakarma	-
Agad Tantra	Law
<b>FACULTY OF EDUCATION</b>	
Education	Linguistics, Siddhanta Darshan, Samhita & Sanskrita
<b>FACULTY OF LAW</b>	
Law	Agad Tantra, Peace Research
Human Rights & Duties Education	-
<b>FACULTY OF COMMERCE</b>	
Commerce	Economics, Peace Research
<b>FACULTY OF VISUAL ARTS</b>	
Applied Arts	-
Pottery & Ceramics	-
Plastic Arts	Painting
Textile Design	Painting
Painting	Textile Design
History of Visual Arts Design	-
<b>FACULTY OF MANAGEMENT STUDIES</b>	
Management Studies	Economics, Commerce, Rasa Shastra & Bhaishjya Kalpana, Peace Research
<b>FACULTY OF ENVIRONMENT AND SUSTAINABLE DEVELOPMENT</b>	
Environmental Sciences (EST)	Economics

**Chair/Centre: The candidates is eligible to appear in the following disciplines in which they are holding qualifying examnation degree for admission:**

### **FACULTY OF ARTS**

Bhojpuri evam Janpadiya Adhyan	Hindi, Sanskrit, Ancient Indian History Culture & Archaeology, Geography*, Instrumental Music (Sitar, Violin, Flute, Tabla), Vocal Music, History, English * denotes (Arts/Science stream)
--------------------------------	---

### **CENTRE OF EXPERIMENTAL MEDICINE & SURGERY [CEMS], FACULTY OF MEDICINE**

Experimental Medicine & Surgery (CEMS)	Biochemistry (Science), Botany, Molecular Human Genetics, Zoology, Applied Microbiology, Microbiology
--	---

### **FACULTY OF SOCIAL SCIENCES**

## RET Information Bulletin 2022

**Pt. Deendayal Upadhyay  
Chair**

Ancient Indian History Culture & Archaeology, Philosophy, Economics, History,  
Political Science, Sociology

### **Note:**

- (i) Candidates seeking admission to the Ph.D. programme are required to give their preferences of main discipline and allied disciplines [subject to said discipline is not listed in Table 1 (d)] to the maximum of *four (04)* choices in the Application Form. The choice of discipline once indicated in the Application Form shall be final and shall not be changed subsequently on any ground. *(There can be less than 4 allied disciplines to a main discipline in which case choice will be limited to given allied disciplines only)*.
- (ii) Subject to a candidate qualifying in the main discipline and/or its allied disciplines, he/she can appear in the Test B/counseling/interview for admissions at such departments as per schedule notified in the results later.
- (iii) For being eligible to apply for RET, a candidate must satisfy himself/herself that he/she fulfills the prescribed minimum eligibility requirements (**Section 'C'**).
- (iv) A candidate can appear in RET of only one discipline as RET will be held on same date and time for all the disciplines.
- (v) Candidates holding M.A. degree in Mathematics, Statistics, Geography and Home Science will appear in RET for Faculty of Arts and those holding M.Sc. degree in these disciplines will appear in RET for Faculty of Science. Similarly, candidates holding M.A. degree in Psychology will appear in RET for Faculty of Social Sciences and those holding M.Sc. degree in Psychology will appear in RET for Faculty of Science.
- (vi) In case of its operational difficulty, RET for concerned disciplines may be withdrawn at any stage as the case may be.
- (vii) **This combination of main and allied discipline will also be applicable for RET-Exempted category candidates.**

## **C. MINIMUM ELIGIBILITY REQUIREMENTS FOR QUALIFYING EXAMINATION & PERCENTAGE OF MARKS:**

### **C1. FOR ADMISSION TO Ph.D. PROGRAMMES:**

A candidate must have (a) passed the qualifying examination securing the minimum percentage of marks on the last date of filling of online application of RET/RET-Exempted 2022 and (b) a minimum of 50 marks in Academic Record:

**Faculty-wise details of Qualifying criteria is given hereunder:**

#### **i). Faculties of Arts, Social Sciences, Science:**

##### **(a) Qualifying Examination:**

Master's degree in the concerned subject OR (ii) Masters degree in any one of the allied subjects. However,

- (i) for admission to Ph.D. in Women's Studies, Peace Research, Public Administration and Nepal Studies candidates holding Post Graduate degree in any discipline of Social Science/ Science/ Humanities/ Management would be eligible. Further candidates having postgraduate degree in Nepali Language and Culture are also eligible for Ph.D. in Nepal Studies.
- (ii) for admission to Ph.D. in Subaltern Studies candidates holding M.Phil. degree in Subaltern Studies would be eligible. Candidates who have done M.Phil. in Subaltern Studies from the Banaras Hindu University shall be considered for direct admission to Ph.D. in Subaltern Studies without appearing in the RET. However, such candidates who have obtained the M.Phil. from other Universities are required to appear in the RET for Subaltern Studies.

- (iii) for admission to Ph.D. in Geophysics, candidates holding BE/B.Tech. degree in Mining Engineering, Civil Engineering, Electrical Engineering, Environmental Sciences (Environmental Technology) would also be eligible.
- (iv) for admission to Ph.D. in Molecular and Human Genetics, candidates holding BE/B.Tech. degree in Biotechnology, Bioscience & Bioengineering, Biomedical engineering, Biochemical Engineering, Materials Science and Pharmaceutical Engineering would also be eligible.
- (v) for admission to Ph.D. in Mathematical Sciences under its main-discipline quota, the candidates holding PG degrees in their allied subjects (as per Appendix I) are allowed to appear in the RET of Mathematical Sciences.
- (vi) for admission to Ph.D. in Human and Clinical Genetics (in Centre for Genetic Disorders), under their main-discipline quota, the candidates holding PG degrees (M.Sc./MD/MS/MDS/M.Tech./DM) in their allied subjects (as per Appendix I) are allowed to appear in the RET of Human and Clinical Genetics.
- (vii) for admission to Ph.D. in Bhojpurī evam Janpadiya Adhyān evam Janpadiya Adhyān, candidates holding PG Degree in English, Hindi, Sanskrit, Ancient Indian History Culture & Archaeology, Geography\*, Instrumental Music (Sitar, Violin, Flute, Tabla), Vocal Music, History are eligible.
- (viii) for admission to Ph.D. in Pt. Deendayal Upadhyay Chair, candidates holding PG Degree in Ancient Indian History Culture & Archaeology, Philosophy, Economics, History, Political Science, Sociology
- (ix) for admission to Ph.D. candidates holding PG Degree in the discipline M.Voc. in Retail and Logistic Management
- (x) for admission to Ph.D. candidates holding PG Degree in the discipline M.Voc. in Hospitality and Tourism Management
- (xi) Candidate holding PG degree in IRDM/IRDP are also eligible for Ph.D. Admission in Social Sciences

**b) Qualifying Marks:** At least 55% in the aggregate or equivalent grade point average in the qualifying examination.

**ii). Faculty of Performing Arts :**

(a) Master's degree in the concerned discipline from a recognized University

**OR**

Master's degree in any discipline and having passed any one of the following examinations other than Performing Arts:

Sangeet Nipun Examination of Bhatkhande Vidyapeeth, Lucknow; (b) Sangeet Praveen Examination of Prayag Sangeet Samiti, Allahabad; (c) Sangeet Alankar Examination of Gandharva Mahavidyalaya, Mumbai; (d) Sangeet Kovid Examination of Indra Kala Sangeet Vishwavidyalaya, Khairagarh, C.G.

**OR**

Any other Professional Music Degree equivalent to the above and recognized by the Banaras Hindu University.

**(b) Qualifying Marks:** At least 55% in the aggregate or equivalent grade point average in the qualifying examination.

**iii). Sanskrit Vidya Dharm Vigyan Sankay:**

**(a) Qualifying Examination:** Acharya degree in the concerned subject **OR** Acharya or equivalent degree in any one of the allied subjects.

**(b) Qualifying Marks:** At least 55% in the aggregate or equivalent grade point average in the qualifying examination.

**iv). Faculty of Commerce:**

**(a) Qualifying Examination:** Master's degree in Commerce (M.Com.)/Master of Finance and Control (M.F.C.)/ Master of Financial Management (MFM) / Master of Risk and Insurance Management (MRIM)/ Master of Financial Management (Risk & Insurance) (MFMRI)/Master of Foreign Trade (MFT)/Master of Business Management (M.B.M.), Master of Business Administration **OR** in allied areas namely, M.A. in Economics/ Psychology, Chartered Accountancy (C.A.) of the Institute of Chartered Accountants of India, Costs & Works Accountancy of the Institute of Costs & Works Accountants of India (I.C.W.A.I.), the Company Secretaryship of the Institute of Company Secretaries of India (I.C.S.I.).

**(b) Qualifying Marks:** At least 55% in aggregate or equivalent grade point average in the qualifying examination.



**v) Faculty of Management Studies:**

(a) **Qualifying Examination:** Master's degree in Business Management (M.B.M.), Management Studies/ Management Sciences (M.M.S.), Business Administration (M.B.A.), International Business Administration (M.I.B.A.), International Business (M.I.B.), M.B.A. (Agri-Business) **OR** two year PGP/PGDM declared equivalent to Master's Degree in Management by AIU/accruited by AICTE/UGC or First class graduate and professionally qualified Chartered Accountant/Cost and Works Accountant/Company Secretary of the concerned statutory bodies.

(b) **Qualifying Marks:** At least 60% in the aggregate or equivalent grade point average in the qualifying examination.

**vi) Faculty of Law:**

(a) **Qualifying Examination:** Master's Degree in the concerned discipline.

(b) **Qualifying Marks:** At least 55% in the aggregate or equivalent grade point average in the qualifying examination.

**vii) Faculty of Education:**

(a) **Qualifying Examination:** M.Ed./M.A. (Education)/ Master's degree in Special Education [M.Ed. (Spl.)] / **OR** (ii) Masters degree in any one of the allied subjects (Indian Philosophy and Religion, Philosophy, Economics, History, Political Science, Psychology, Sociology)

(b) **Qualifying Marks:** At least 55% in aggregate or equivalent grade point average in the qualifying examination.

**viii) Faculty of Medicine:**

(a) **Qualifying Examination:** Doctor of Medicine (M.D.)/ Master of Surgery (M.S.)/ Doctoratus of Medicinus (D.M.)/ Magister Chirurgiae (M.Ch.)/ Diplomate of National Board (D.N.B) in the concerned subject recognized by the Medical Council of India. **OR** M.Sc. in the concerned subject **OR** Master's degree in any one of the allied subjects.

(b) **Qualifying Marks:** At least 55% in aggregate or equivalent grade point average in the qualifying examination (wherever the marks/grades are awarded).

**For admission to Ph.D. in CEMS a candidate(s) holding PG Degree in Biochemistry (Science/Medicine), Biotechnology, Botany, Molecular Human Genetics, Zoology, Applied Microbiology, Microbiology**

**x) Faculty of Ayurveda:**

(a) **Qualifying Examination:** M.D.(Ay.)/ M.S.(Ay.) recognized by Central Council of Indian Medicine (CCIM). **OR** Master's degree in any one of the allied subjects.

(b) **Qualifying Marks:** At least 55% in aggregate or equivalent grade point average in the qualifying examination.

**xi) Faculty of Dental Sciences:**

(a) **Qualifying Examination:** Master's Degree in Dental Surgery or Master's degree in any one of the allied subjects.

(b) **Qualifying Marks:** At least 55% in aggregate or equivalent grade point average in the qualifying examination (wherever the marks/grades are awarded)

**xii) Faculty of Visual Arts:**

(a) **Qualifying Examination:** Bachelor's degree in Fine Arts under four year course and Master's degree in Fine Arts: MFA in applied Art **OR** MFA in Plastic Arts (Sculpture) **OR** MFA in Painting **OR** in Textile Design **OR** MFA in Pottery Ceramic

(b) **Qualifying Marks:** At least 55% in aggregate or equivalent grade point average in the qualifying examination.

**xiii) Faculty of Environment & Sustainable Development:**

(a) **Qualifying Examination: Essential:** A candidate having Master's degree in the concerned subject **OR** Masters degree in any one of the allied subjects, namely, Agriculture (all disciplines), Chemistry/Applied Chemistry, Atmospheric Sciences, Microbiology/Applied Microbiology, Physics/Applied Physics, Biochemistry, Bio-informatics, Biotechnology, Botany, Earth

## RET Information Bulletin 2022

Sciences, Ecological Sciences, M.Tech. in Environmental Engineering, Environmental Biotechnology, Environmental Management, Environmental Microbiology, M.Sc. in Geography, Geology, Geophysics, Life Science/Biosciences, Meteorology, Wildlife Biology, Zoology, Statistics, Remote Sensing & GIS/Geoinformatics provided the candidate has opted at least one paper related to environment and/or sustainable development.

**(b) Qualifying Marks:** At least 55% in aggregate or equivalent grade point average in the qualifying examination.

### CALCULATION OF ACADEMIC RECORD:

**Case 1** Where postgraduate degree is considered as the qualifying examination, and

a) Marks are awarded in Postgraduate Examination

$$M = (X_1 + 0.6 X_2 + 0.25 X_3 + 0.15 X_4)/2,$$

b) Marks are not awarded in Postgraduate Examination

$$M = (0.6x X_2 + 0.25x X_3 + 0.15x X_4)$$

**Case 2** Where undergraduate degree is considered as the qualifying examination,

$$M = (X_2 + 0.4 X_3 + 0.3 X_4)/1.7,$$

**Case 3** Where the candidate has passed Higher Secondary Examination only (instead of High School & Intermediate both)

$$M = (X_1 + 0.6x X_2 + 0.4x X_5)/2$$

Where,

M	=	Marks for the academic record,
X <sub>1</sub>	=	Percentage of marks obtained at the post-graduate examination,
X <sub>2</sub>	=	Percentage of marks obtained at the under-graduate examination
X <sub>3</sub>	=	Percentage of marks obtained at the intermediate/higher secondary examination,
X <sub>4</sub>	=	Percentage of marks obtained at the high school examination , and
X <sub>5</sub>	=	Percentage of marks obtained at the higher secondary examination.
<b>Note: 'M', X<sub>1</sub>, X<sub>2</sub>, X<sub>3</sub>, X<sub>4</sub>, X<sub>5</sub> will be calculated upto two places of decimal. 50 Marks in Academic record means mark should be 50 and above. Rounding for lower marks not applicable.</b>		

### Example (Case 1):

If X<sub>1</sub> = 56.10%, X<sub>2</sub> = 60.39%, X<sub>3</sub> = 62.25%, X<sub>4</sub> = 55.65%

$$M = [56.10 + (0.6 \times 60.39) + (0.25 \times 62.25) + (0.15 \times 55.65)]/2$$

$$M = 58.11$$

- NOTE:**
- (i) A candidate appearing in NET/NET–JRF may also apply for the Ph. D. programme provided the result of the NET/NET–JRF examination is declared before the start of the counseling for admission to the Ph.D. programme and he/she fulfils the other eligibility criteria.
  - (ii) If the applicant has passed the qualifying examination *where grades are awarded and:*
    - (a) Where the Grade Sheet does not mention the equivalent percentage of marks from grade points, the candidate should submit such a Certificate of conversion from the concerned Institution mentioning either the converted percentage, or the formula for the actual conversion of grade point average to percentage of marks.
    - (b) Where the Grade Sheet itself mentions the equivalent percentage of marks from grade points, or the formula for such conversion, the candidate should get both sides of the Degree/Grade Sheet photocopied showing the equivalent percentage of marks/conversion formula and enclose with the Application Form.
    - (c) In case there is no conversion formula for computing the percentage, CGPA (out of 10) multiplied by 10 will constitute the percentage. In case where the CGPA is available only out of 4, then CGPA multiplied by 25 will constitute the percentage.
    - (d) For the candidates belonging to the RET Exempted category, the minimum benchmark of obtaining the academic record of 50 shall not apply. However, the Academic Record for such candidates would still be calculated, as per the aforesaid formula, for the purposes of determining the *inter se* merit amongst the RET Exempted category applicants.
  - (iii) "Aggregate percentage of marks" will include grace marks awarded to a candidate.
  - (iv) ***A candidate already possessing a Ph. D. degree of this or any other University shall be eligible to be admitted to the Ph. D. programme for an additional Ph. D. degree in a subject other than the subject in which he/she already possesses the Ph. D. Degree. The admission of such a candidate will be at the discretion of the Vice-Chancellor, who, on the basis of specific recommendation and full justification by the Departmental/School Research Committee (DRC/SRC) after***

## RET Information Bulletin 2022

*considering certain relevant criteria such as, the synopsis of the proposed topic, relevance of the proposed topic and its relationship with the topic of the first Ph. D., etc. will take a final decision.*

- (v) A Senior Resident/Service Senior Resident of the Faculties of Medicine, Ayurveda & Dental Sciences shall also be eligible to appear in the test, subject to fulfilling other eligibility conditions.
- (vi) Candidates having M.Phil in the concerned discipline are also eligible.

**Applicant must satisfy himself/herself about fulfilling the minimum eligibility requirements as prescribed above before filling the Application Form.**

### **C.2: INTEGRATED M.PHIL-PH.D. PROGRAMME:**

#### **(i) FACULTY OF ENVIRONMENT AND SUSTAINABLE DEVELOPMENT**

**Qualifying Examination:** Master's degree in Environmental Science, Environmental Science (Environmental Technology), Environmental Management, Environmental Science and Sustainable Development, Environmental Studies, and Environmental Biology **OR** Master's Degree in any one of the subjects in the environment related areas of in Physical Sciences, Life Sciences, Chemical Sciences, Medical Sciences, Agriculture, Earth Science, Atmospheric Science, Remote Sensing, Geoinformatics, Mathematics, Statistics, Engineering & Technology **OR** M.A. in Economics with major/specialization in Environmental Economics **OR** M.A. in Sociology with major/specialization in Environmental Sociology **OR** M.A. in Rural Development **OR** LLB/LLM with major/specialization in Environmental Law **OR** Bachelor of Engineering/Technology in any branch/discipline;

**Qualifying Marks:** Must have at least 55% in the aggregate or equivalent grade point average in the examination of the qualifying degree obtained from any Indian University/Institution recognized by AIU/AICTE or its equivalent grade 'B' in the UGC 7-Point scale (or an equivalent grade in a point scale wherever grading system is followed) or an equivalent degree from a foreign educational Institution accredited by an Assessment and Accreditation Agency which is approved, recognized or authorized by an authority established or incorporated under a law in its home country or any other statutory authority in that country for the purpose of assessing, accrediting or assuring quality and standards of educational institutions and a minimum academic record of 50 [calculated as per formula given in section C1].

### **C.3: MASTER OF PHILOSOPHY (M.Phil) in:**

#### **(i) Subaltern Studies, Faculty of Social Sciences:**

**Qualifying Examination:** Post graduate degree in any disciplines of Social Sciences/humanities with minimum 55% marks at qualifying examination.

#### **Note:**

- (i) Any degree mentioned under the qualifying examination for each Faculty in the above sections (C.1, C.2 and C.3) pertains to the degree awarded by this University or any other University established by law for the time being in force or any other degree recognized as equivalent thereto in that subject.
- (ii) Candidates belonging to SC/ST/PC/OBC categories may see the provisions on relaxations given at Section D (iv).

### **D. RESERVATIONS AND RELAXATIONS:**

#### **D.1. SCHEDULED CASTES/SCHEDULED TRIBES:**

Seats shall be reserved for Scheduled Caste (15%) and Scheduled Tribe (7.5%) candidates in each discipline/programme. Admission against these seats will be made provided the candidate has passed the Qualifying Examination and qualifies RET/M.Phil Entrance Test as provided in Section I of this Information Bulletin.

Each SC/ST candidate shall have to submit a self attested copy of the Certificate mentioning that the candidate belongs to SC/ST community. Such certificates shall be subject to verification from the concerned District Magistrate. The following are empowered to issue the certificate:

- a. District Magistrate/ Additional District Magistrate/ Collector/ Deputy Commissioner/ Addl. Deputy Commissioner/ Deputy Collector / 1<sup>st</sup> Class Stipendiary Magistrate/ City Magistrate/ Sub-Divisional Magistrate/ Taluka Magistrate/ Executive Magistrate/ Extra Assistant Commissioner.
- b. Chief Presidency Magistrate/Addl. Chief Presidency Magistrate/Presidency Magistrate.
- c. Revenue Officer not below the rank of Tehsildar.
- d. Sub-Divisional Officer of the area where the candidate and/or his family normally resides.



e. Administrator/Secretary to the Administrator/ Development Officer (Lakshadweep Islands).

**Candidates must note that Certificate from any other person/authority shall not be accepted in any case.** If the candidate happens to belong to SC or ST, his/her caste/tribe must be listed in the appropriate Govt. of India schedule. The caste Certificate should clearly state: (a) Name of his/her caste/tribe (b) whether he/she belongs to SC or ST (c) District and the State or Union Territory of his/her usual place of residence and (d) the appropriate Govt. of India schedule under which his/her caste/tribe is approved by it as SC or ST.

However, if a student seeks admission under some other category (for example: PC/Employee Ward etc.) the candidate should satisfy the minimum eligibility requirement for that category.

### **D.2. OTHER BACKWARD CLASSES (OBCs):**

27% Reservation to candidates belonging to OBC category (excluding under creamy layer) will be provided in different programmes. The authorities to issue the OBC certificate are the same as in case of SC/ST provided in section 4 (i) above. The caste in the OBC certificate will be those only which are in the list of Central Govt. Further the OBC certificate should clearly mention that the candidate is not under creamy layer. However, if an OBC candidate seeks admission under some other category (for example: PC/Employee Ward etc.) the candidate should satisfy the minimum eligibility requirement for that category.

### **D.3. Economically Weaker Sections (EWSs):**

In accordance with O.M.F.No.12-4/2019-U1 dated 17<sup>th</sup> January 2019 of the Department of Higher Education, MHRD, Government of India, 10% reservation for Economically Weaker Sections shall be provided in admission during the Academic Session 2022-23.

The prospective candidates who are claiming under EWS category may fill their EWS category at the time of registration and filling of online application of RET/RET-Exempted 2022.

The benefit of reservation under EWS can be availed upon production of an "Income and Asset Certificate" issued by a Competent Authority (an officer not below the Tehsildar in the States/UTs).

**Note :** Income covered all sources i.e. salary, agriculture, business, profession, etc.

The Income and Asset Certificate issued by any one of the following authorities in the prescribed format shall only be accepted as proof of candidate's claim as belonging to EWS.

- District Magistrate/Additional District Magistrate/ Collector/ Deputy Commissioner/Additional Deputy Commissioner/ 1st Class Stipendiary Magistrate/ Sub-Divisional Magistrate/ Taluka Magistrate/ Executive Magistrate/ Extra Assistant Commissioner
- Chief Presidency Magistrate/Additional Chief Presidency Magistrate/ Presidency Magistrate
- Revenue Officer not below the rank of Tehsildar
- Sub-Divisional Officer or the area where the candidate and/or his family normally resides.

The Officer who issues the certificate would do the same after carefully verifying all relevant documents following due process as prescribed by the respective State/UT.

### **Eligibility for EWS (Economically Weaker Section) Quota in RET**

**Criteria for EWSs:** Whether a candidate(s) is/are considered as Economically Weak or not, is based on the income and assets of your family. To come under EWS, you will need to satisfy all the criteria listed below:

The persons who are not covered under the scheme of reservation for SCs, STs and OBCs and whose family has gross annual income below Rs 8.00 lakh (Rupees eight lakh only) are to be identified as EWSs for the benefit of reservation. Income shall also include income from all sources i.e. salary, agriculture, business, profession, etc. for the financial year prior to the year of application. Also persons whose family owns or possesses any of the following assets shall be excluded from being identified as EWS, irrespective of the family income:

1. 5 acres of agricultural land and above;
2. Residential flat of 1000 sq ft. and above;

3. Residential plot of 100 sq. yards and above in notified municipalities;
4. Residential plot of 200 sq. yards and above in areas other than the notified municipalities.

**D.4. PERSONS WITH DISABILITY:**

5% seats shall be reserved for Persons with Disability Candidates on horizontal basis in following manner: (a) blindness and low vision; (1%) + (b) deaf and hard of hearing; (1%) + (c) locomotor disability including cerebral palsy, leprosy cured, dwarfism, acid attack victims and muscular dystrophy; (1%) + (d) autism, intellectual disability, specific learning disability and mental illness; (1%) + (e) multiple disabilities from amongst persons under clauses (a) to (d) including deaf-blindness in the posts identified for each disabilities: (1%) (on horizontal reservation basis). Such candidates will have to submit a self attested copy of Disability Certificate issued by the District CMO/ **Civil Surgeon/ Medical Superintendent of a Government Health Care Institution** with the Application Form **as per Appendix – 1 in the online application form.**

**‘Scribe’ for Candidates having benchmark disability:**

The facility of Scribe may be allowed to following categories of candidates with benchmark disability as defined under section 2 (i) of the RPwD Act, 2016, if so desired by him/her:

- i) Candidates with benchmark disabilities in the category of blindness, locomotor disability (both arm affected-BA) and cerebral palsy.

Other category of candidates with benchmark disabilities on production of a certificate to the effect that the candidate concerned has physical limitation to write and scribe is essential to write examination on his behalf from the Chief Medical Officer/Civil Surgeon/ Medical Superintendent of a Government Health Care Institution as per proforma in **Appendix – 1 in the online application form.**

The candidate shall have option to bring his/her own ‘Scribe’ or to make a request to the Office of the Controller of Examinations, BHU for providing the same. A candidate falling under the aforesaid criterion shall be required to fill up relevant sections of the Online Application Form regarding requirement of scribe and whether he/she would bring his/her own scribe or the same is to be provided by the University. However, allotment of Centres to candidates having benchmark disability and having requirement of ‘Scribe’ shall be governed by the following policy:

- i) As far as practicable, candidates opting to bring their own scribe would be allotted one of the Test Cities of their choice.
- ii) Candidates who request the University for providing Scribe shall be allotted a Test Centre in Varanasi only.

**Note:**

- a) In case a candidate with benchmark disability is allowed to bring his own scribe, the qualification of the scribe should be **one step below the qualification of the candidate taking examination.** Such candidates should submit details of the own scribe as per proforma at APPENDIX-II and upload it on the Entrance Test Portal [[www.bhuonline.in](http://www.bhuonline.in)] using the candidate’s login, at least 30 days prior to the date of the Entrance Test.
- b) A candidate bringing his/her own scribe would be required to bring the printout of uploaded Appendix II, Photo Identification Document (issued by the Government) of the Scribe and Disability Certificate issued by the District CMO/ Civil Surgeon/ Medical Superintendent of a Government Health Care Institution with the Application Form as per Appendix – I, in original. A self-attested copy of these documents needs to be submitted at the Test Centre.
- c) “Compensatory time” of 20 minutes per hour of examination for persons who are allowed use of scribe would be provided. All the candidates with benchmark disability not availing the facility of scribe would also be allowed additional time of 20 minutes per hour of examination.

The PWD candidates called for Counseling for possible provisional admission will be examined by a Medical Board constituted by BHU and if necessary, will be referred by the Medical Board to other recognized bodies for the purpose, as per criteria fixed by the University. The decision of the Medical Board constituted by BHU will be final.

## RET Information Bulletin 2022

**Note:** Wherever the number of seats is small, the University will have the right to combine some of the groups to calculate the number of seats for reserved categories.

### **D.5. RELAXATION IN MINIMUM PERCENTAGE OF MARKS/ACADEMIC RECORD FOR SCHEDULED CASTES (SC)/SCHEDULED TRIBES (ST) / PERSONS WITH DISABILITIES (PwD) / OTHER BACKWARD CLASSES (OBCs) CANDIDATES:**

**(a) In admission to Ph.D. programmes**

There shall be a relaxation of 5% marks (or equivalent grade point average) for SC/ST and PC candidates in the minimum marks required in the qualifying examination. The minimum **Academic Record** required for SC/ST/PC and OBC candidates shall be 45 and 47.50 respectively. However, a Physically Challenged (PC), SC/ST/OBC candidate shall not get the double benefit of being SC/ST/ OBC as well as PC candidate in the above relaxations.

**(b) In admission to Integrated M.Phil-Ph.D. programme**

There shall be a relaxation of 5% marks (or equivalent grade point average) for SC/ST and PC candidates in the minimum marks required in the qualifying examination. The minimum **Academic Record** required for SC/ST/PC and OBC candidates shall be 45 and 47.50 respectively. However, a Physically Challenged (PC), SC/ST/OBC candidate shall not get the double benefit of being SC/ST/ OBC as well as PC candidate in the above relaxations.

**(c) In admission to M.Phil programmes**

In the case of SC/ST candidates, for all the above courses there will be no requirement for minimum percentage of marks in the aggregate in the qualifying examinations except that they must have passed the qualifying examination and appeared in the concerned Entrance Test. Further, for OBC and PC candidates, there will be a relaxation of 5% marks in aggregate in the qualifying examination in minimum eligibility requirements in comparison to general candidates.

### **D.6. Consideration of Reserved Category Meritorious Candidates as General Candidates:**

In a discipline/programme, if the merit of a reserved category candidate is more than or equal to the merit of the last admitted general candidate, the reserved category candidate will be treated as general candidate in that discipline. Further, if the candidate avails any other facility under reservation such as relaxation in minimum eligibility requirement, age relaxation, Hostel allotment, then the candidate will be treated under concerned reserved category.

## **E. DISCIPLINE NAME, DISCIPLINE CODE NUMBER & MAXIMUM INTAKE:**

### **E1. DISCIPLINE DETAILS FOR PH.D. PROGRAMME**

The candidates will be required to opt the preferences for disciplines alongwith code numbers on the 'Application Form'. The details about this are given below:

<b>FACULTY OF ARTS</b>											
Discipline	Code No.	Maximum intake		Discipline	Code No.	Maximum intake		Discipline	Code No.	Maximum intake	
		RET	RET-E			RET	RET-E			RET	RET-E
<b>Arabic</b>	<b>831</b>	<b>1</b>	<b>1</b>	Lib. & Inf. Sc.	856	1	0	Linguistics	847	0	6
Bengali	839	0	3	Physical Education	857	6	6	Sanskrit	846	0	20
English	833	0	21	<b>Museology</b>	<b>853</b>	<b>0</b>	<b>3</b>	Pali & Buddhist Studies	845	0	19
				Geography* (including MMV)	902	0	28	Urdu	844	0	3
French	834	0	6	Home Science*	903	2	8	<b>A.I.H.C. &amp; Arch.</b>	<b>848</b>	<b>0</b>	<b>14</b>
<b>History of Art</b>	<b>849</b>	<b>0</b>	<b>4</b>	Mathematics*	904	3	34	Journalism &	858	0	9

## RET Information Bulletin 2022

Tourism Management	901	0	0	Statistics*	905	8	10	Mass Communication			
Nepali	836	0	1	Marathi	842	2	1	I.P.R.	850	0	1
Tamil	841	0	0	Telugu	843	4	4	Philosophy	851	0	2
Russian	838	0	2	Persian	837	8	8	Hindi	840	20	50
Chinese	832	1	0	German	835	3	6	Prayojan Moolak Hindi	906	1	2
<b>Kannada</b>		<b>0</b>	<b>0</b>	Bhojpuri evam janpadiya adhyan	907	0	10	Retail and Logistic Management	908	0	0
								Hospitality and Tourism Management	909	0	0

\* denotes : Total number of seats displayed in the table will be combined number of seats of Faculty of Arts and Science group disciplines  
NOTE: Colleges admitted to the Privileges of the University may be allowed to have intake in certain disciplines of the Faculty of Arts.

### FACULTY OF VISUAL ARTS

Discipline	Code No.	Maximum intake		Discipline	Code No.	Maximum intake		Discipline	Code No.	Maximum intake	
		RET	RET-E			RET	RET-E			RET	RET-E
Painting	760	0	5+2(PT)	<b>Plastic Arts</b>	<b>762</b>	<b>0</b>	<b>1</b>	Textile Design	764	0	2+1 (PT)
Applied Arts	761	1	1+2(PT)	Pottery & Ceramics	763	0	0				

### FACULTY OF EDUCATION

### FACULTY OF LAW

### FACULTY OF MANAGEMENT STUDIES

Discipline	Code No.	Maximum intake		Discipline	Code No.	Maximum intake		Discipline	Code No.	Maximum intake	
		RET	RET-E			RET	RET-E			RET	RET-E
Education	790	8	10	Human Rights & Duties Education	981	2	2	Management Studies	992	0	24 + 4(PT)
				Law	875	7	7				

### FACULTY OF SOCIAL SCIENCES

Discipline	Code No.	Maximum intake		Discipline	Code No.	Maximum intake		Discipline	Code No.	Maximum intake	
		RET	RET-E			RET	RET-E			RET	RET-E
Economics (DAV-5)	859	16	5	History	860	0	1 (IPT) <sup>S</sup>	<b>Political Science</b>	<b>861</b>	<b>11</b>	<b>1 (IPT)</b>
Psychology* (MMV-2)	953	0	15	Social Work	951	0	0	Public Administration	958	0	0
				Subaltern Studies	869	0	0				
Personnel Management and Industrial Relations	952	0	0	Women Studies	955	0	2	Sociology	862	5	15
				Nepal Studies	956	0	0	Peace Research	957	0	4
				Pt. Deen Dayal Upadhyay Chair**	959	0	0				

\* denotes: Combined number of seats of Faculty of Social Sciences and Science group disciplines.

NOTE: Colleges admitted to the Privileges of the University may be allowed to have intake in certain disciplines of the Faculty of Social Sciences & the admission will be taken as per preferences and index of the candidate.

\*\* Pt. Deen Dayal Upadhyay Chair associated with the Dean, Fac. of Social Sciences till any appointment made in Chair.



## RET Information Bulletin 2022

\$ IPT denotes Internal Part Time/ PT denotes Part time											
FACULTY OF COMMERCE				FACULTY OF PERFORMING ARTS							
Discipline	Code No.	Maximum intake		Discipline	Code No.	Maximum intake		Discipline	Code No.	Maximum intake	
		RET	RET-E			RET	RET-E			RET	RET-E
Commerce	870	15	10	Instrumental (Violin)	768	0	0	Musicology	998	0	0
				Instrumental (Sitar)	767	0	7	Vocal	766	0	10
				Instrumental (Tabla)	770	0	1	Dance (Kathak)	771	0	2
				Instrumental (Flute)	769	0	0	Dance (Bharat Natyam)	772	0	1
FACULTY OF SANSKRIT VIDYA DHARMA VIJNANA											
Discipline	Code No.	Maximum intake		Discipline	Code No.	Maximum intake		Discipline	Code No.	Maximum intake	
		RET	RET-E			RET	RET-E			RET	RET-E
Shukla Yajurveda	681	3	2	Agam Tantra	689	1	1	Vedanta	692	1	1
Krishna Yajurveda	682	1	0	Dharm Vijnana	699	2	0	Puranetihas	693	2	0
Samveda	683	1	0	Dharmashastra	690	1	0	Sankhyayoga	694	1	0
Rigveda	684	1	0	Mimansa	697	1	0	Prachin Nyaya	695	0	0
Vyakarana	685	3	3	Jain Darshan	691	1	1	Nyaya Vaisheshika	696	1	1
Sahitya	686	0	1	Baudha Darshan	698	0	0	Jyotish Ganit	687	5	5
								Jyotish Falit	688	5	5
FACULTY OF SCIENCE											
Discipline	Code No.	Maximum intake		Discipline	Code No.	Maximum intake		Discipline	Code No.	Maximum intake	
		RET	RET-E			RET	RET-E			RET	RET-E
Physics	881	40	50	Biochemistry	887	0	13	Psychology* (MMV-2)	897	0	15
Chemistry	882	20	120	Geophysics	891	0	14	Geography * (including MMV)	898	0	28
Geology	883	7	23	Bioinformatics	893	1	2	Biotechnology	945	0	6
Zoology (including MMV)	884	9	39	Home Science*	894	2	8	Molecular and Human Genetics	944	0	2
Botany	885	0	10	Mathematics*	895	3	34	Environmental Science	983	0	3
Computer Science	886	4	8	Statistics*	896	8	10	Applied Microbiology	985	0	3
Mathematical Sciences (Math-2, Com.Sc.-2)	988	0	4	Petroleum Geosciences	986	0	0	Human and Clinical, Genetics (at Centre for Genetic	987	0	4

## RET Information Bulletin 2022

								Disorders)			
* denotes : Combined number of seats of Faculty of Arts, Social Sciences and Science group disciplines											
<b>INSTITUTE OF MEDICAL SCIENCES</b>											
<b>FACULTY OF AYURVEDA</b>											
Discipline	Code No.	Maximum intake		Discipline	Code No.	Maximum intake		Discipline	Code No.	Maximum intake	
		RET	RET-E			RET	RET-E			RET	RET-E
Siddhanta Darshan	601	4	2	Medicinal Chemistry	606	7	6	Swasthavritta & Yoga	612	6	7
<b>Samhita &amp; Sanskrit</b>	<b>602</b>	<b>3</b>	<b>4</b>	Shalya Tantra	607	22	14	Kaumarbhritya/Balroga	613	6	7
Prasuti Tantra	603	10	4	Shalaky Tantra	608	8	4	Vikrit Vigyan	614	9	13
Dravyaguna	604	3	0	Kayachikitsa	609	20	9	Rachana Sharir	615	4	3
Rasa Shastra & Bhaishjya Kalpane	605	16	5	<b>Kriya Sharir</b>	<b>610</b>	<b>4</b>	<b>3</b>	Sangyaharan	616	4	2
Agad Tantra	617	3	3	Panchakarma	618	12	9				
<b>FACULTY OF MEDICINE</b>											
Discipline	Code No.	Maximum intake		Discipline	Code No.	Maximum intake		Discipline	Code No.	Maximum intake	
		RET	RET-E			RE T	RET-E			RET	RET-E
Anatomy	631	2	2	Microbiology	643	0	6	Pharmacology	655	0	0
				Molecular Biology	644	0	2	<b>Physiology</b>	<b>656</b>	<b>1</b>	<b>0</b>
Anesthesiology	632	0	5	Nephrology	645	0	4+4(PT)	Plastic Surgery	657	0	6
Biochemistry	633	0	6	Neurology	646	0	12	Community Medicine	658	0	0
Biophysics	634	0	0	Neurosurgery	647	0	0	Health Statistics	666	0	0
Cardiology	635	0	16	Obstetrics & Gynecology	648	0	0	Radio Diagnosis & Imaging	660	0	0
Cardiothoracic Surgery	636	20	10	Orthopedics	649	2*	2+2*	Radiotherapy & Radiation Medicine	661	2	6
Dermatology & Venereology (Skin & VD)	637	0	0	Otolaryngology (ENT)	638	1	4	Medicine	642	0	6
Forensic Medicine	639	0	0	Ophthalmology	650	0	0	T.B. & Chest Diseases	663	0	0
Gastroenterology	640	4	2	Pathology	652	0	0	Surgical Oncology	662	0	0
Endocrinology & Metb.	665	0	0	Pediatrics	653	0	0	Psychiatry	659	0	0
General Surgery	641	0	26	Pediatrics Surgery	654	0	0	Urology	664	0	0
Geriatric Medicine	670	0	5	<b>FACULTY OF ENVIRONMENT &amp; SUSTAINABLE DEVELOPMENT (ESD)</b>				<b>FACULTY OF DENTAL SCIENCES</b>			
Centre of Experimental Medicine & Surgery	669	0	6	Discipline	Code No.	Maximum intake		Discipline	Code No.	Maximum intake	
				<b>Environment Sciences</b>	<b>984</b>	<b>2</b>	<b>8</b>	Dental Science	671	8	2

## RET Information Bulletin 2022

**Note: The maximum intakes indicated above are the intakes through RET/RET-Exempted, RET and RET – Exempted mode [given in Table 1(a), Table 1(b) and Table 1(c)].**

\*For Physiotherapy

### E.2. DISCIPLINE DETAILS FOR INTEGRATED M.PHIL-PH.D. AND M.PHIL. PROGRAMMES

INTEGRATED M.PHIL-PH.D.		
FACULTY OF ENVIRONMENT & SUSTAINABLE DEVELOPMENT (ESD)		
Discipline	Code No.	Maximum intake
Integrated M.Phil-Ph.D. Programme in ESD <sup>1</sup>	989	10 <sup>1</sup>
<b>Note: <sup>1</sup>The intake in Integrated M.Phil-Ph.D. Programme in ESD includes candidates from RET and RET Exempted categories.</b>		
M.PHIL.		
FACULTY OF SOCIAL SCIENCES		
M.Phil in Subaltern Studies	999	20

### F. GENERAL NOTES:

- (i) Notwithstanding anything contained in the Ph.D. Ordinances, the eligibility requirements for the purpose of admission shall be only those which are mentioned in the Information Bulletin of the academic session concerned.
- (ii) All Ph. D. Scholars shall be governed by the Ph. D. Ordinances.
- (iii) The candidate shall be bound by BHU Statutes/Ordinances/Rules and Regulations framed from time to time.

### G. GENERAL RULES:

- (i) A candidate who satisfies the requirements mentioned in Section C should apply on the prescribed online Application Form for admission to the concerned programme.
- (ii) Application Forms of candidates who have submitted forged/fake certificates or adopted fraudulent means shall be REJECTED without any intimation to the candidates. Further, such candidates shall be debarred from appearing in any subsequent Entrance Tests conducted by BHU.
- (iii) Candidates are allowed to appear at the RET/ M.Phil. Entrance Test provisionally subject to the final verification of Mark sheets/Degrees/Certificates, validity of Certificates/Mark sheets of Qualifying Examination and also of involvement in the adoption of unfair means in any of the University Examination/Entrance Tests held earlier, at the time of admission. Degrees/Certificates recognized by Association of Indian Universities (AIU) shall only be deemed as equivalent degrees/certificates.
- (iv) The Distance Education Council of Indira Gandhi National Open University (IGNOU)/Association of Indian Universities (AIU) is the only authority to recognize the Degrees/Certificates of Distance Education. Such Candidates are **provisionally** permitted to appear in the RET/ M.Phil. Entrance Test and will be required to submit certificates from Distance Education Council of IGNOU, New Delhi regarding recognition/approval of the courses.
- (v) Mere appearance in the Entrance Test or securing pass marks at the RET/ M.Phil. Entrance Test does not entitle a candidate to be considered for admission to a discipline/programme unless he/she fulfils the eligibility conditions. APPLICANTS MUST FULLY SATISFY THEMSELVES ABOUT THEIR ELIGIBILITY AS PRESCRIBED ABOVE, BEFORE FILLING IN THE APPLICATION FORM. If any applicant who is inadvertently allowed to appear at the Entrance Test who otherwise does not fulfill the minimum eligibility requirements, he/she cannot, at a later date, use that as a right to claim that he/she meets the eligibility requirements. The University reserves the right to cancel/refuse admission at any point of time if it is found that:

- (a) Minimum eligibility requirements are not fulfilled.
  - (b) False documentation has been done.
  - (c) Any other similar valid reason.
- (vi) Candidates appearing at the RET/ M.Phil Entrance Test shall be subject to Rules, Regulations and Ordinances relating to the University examinations. Candidates found adopting unfair means (see Section Q) shall be liable to punishment as per University rules.
- (vii) (a) In case of any dispute relating to the RET/admission to Ph.D., the decision of the DRC/SRC shall be final. An appeal may lie to the Vice-Chancellor, BHU against such decision. In no case any candidate shall take recourse to the court of law directly.
- (b) In case of any litigation relating to the RET/ M.Phil Entrance Test /admission to Ph.D./M-Phil course, the District Court of Varanasi and the High Court of Judicature of Allahabad shall only have the jurisdiction.

**NOTWITHSTANDING ANYTHING TO THE CONTRARY CONTAINED ANYWHERE IN THE ORDINANCES OF THE UNIVERSITY, NO SCRUTINY/ RE-EVALUATION OF THE ANSWERSHEET OF THE RET/ M.PHIL ENTRANCE TEST SHALL BE ALLOWED ON ANY GROUND. FURTHER, NO REPRESENTATION OR QUERY REGARDING THE CONDUCT OF THE TEST SHALL BE ENTERTAINED.**

**H. DIRECT ADMISSION (Without appearing in RET, i.e., under RET Exempted category: This is applicable for admission to various Ph.D. programmes and Integrated M.Phil-Ph.D. programme only)**

A candidate who fulfils one of the following requirements may be considered for direct admission to the Ph.D./ Integrated M.Phil-Ph.D. programme without appearing in the RET:

- (i) A candidate who is qualified in a national level test such as National Eligibility Test (NET-JRF), NET-LS (without fellowship), Graduate Aptitude Test for Engineering (GATE), State Level Eligibility Test (SLET) accredited by UGC, Central or State Government.
- (ii) A candidate who is a recipient of National Doctoral Fellowship or other fellowships from government/semi-government organizations (through All-India selection procedure conducted by the agency/ organisation for award of research fellowships) such as Council of Scientific and Industrial Research (CSIR), University Grants Commission (UGC), All India Council for Technical Education (AICTE), Department of Science and Technology (DST), Defense Research and Development Organization (DRDO), Department of Atomic Energy (DAE), Department of Biotechnology (DBT), Indian Council of Agricultural Research (ICAR), Indian Council of Medical Research (ICMR), Ayurveda Yoga Unani Siddha Homeopathy (AYUSH) and similar National Level Organizations.
- (iii) A candidate who is selected under Quality Improvement Program (QIP) of AICTE, Faculty Development Programme of a State Government or of UGC.
- (iv) An employee of any other university/ institution/ college/ government department/ public sector undertaking/ R & D organization/ private industry, who is sponsored as a full-time candidate by the said organisation, with at least 3 years of experience and who is relieved on study leave for a period of not less than two years for pursuing Ph. D. programme in a Department/ School of the University.
- (v) A foreign national who is a recipient of fellowship by Indian Council for Cultural Relations (ICCR), Government of India and who is sponsored by his/her government.
- (vi) A self-financing foreign national who is admitted through the Embassies/High commission of his/her country or admitted under a MoU with due clearance from the Indian Missions abroad. As per revised guidelines/ instructions of the Department of Higher education, MHRD, GOI on grant of research visa, the foreigners who desire to undertake research in India, should therefore, apply to the concerned
- (vii) Indian Missions abroad with the brief synopsis of the research project to be undertaken in India, the details of places to be visited, previous visits, whether the scholar has secured admission into a recognized or reputed institution and evidence of financial resources.



- (viii) A candidate appointed as a Research Fellow in projects approved by the above external funding agencies **shall not** be considered for this category {except those research fellows that are covered under provisions of para (i), (ii) and (x) of this section}.

**Note:** 1. The equivalence of the degree possessed by the foreign candidates belonging to the Clauses IV.1 (b) (v) and (vi) of the Ph.D. Ordinance, shall be settled by the equivalence committee of the concerned faculty before their admission. They shall be admitted to the Ph. D. programme only if the degree possessed by them entitles them for enrolment as Ph. D. scholars in the universities of their own countries.

2. English Proficiency certificate of TOEFL (minimum 70 marks) or IELTS (minimum 6 bands) score is mandatory for foreign candidates at the time of submission of application form for the admission in the University. If the candidate is unable to provide any of these scores/certificate or English Proficiency certificate then the candidate will be asked to appear in the English Proficiency test to be conducted by Office of the Controller of Examinations. He/she has to clear Intermediate level course and need an overall minimum score of 40% to confirm admission.

3. The aforesaid provision may be relaxed for candidates having nationality of English speaking countries or who have passed their qualifying degree from the Institution with English as medium of instruction.

4. The supernumerary quota for self-financing foreign nationals shall be restricted to a maximum of 15% of the total available Vacancies in a Department/ School.

- (ix) A candidate who is already registered as a Ph. D. scholar in some other university and whose supervisor joins this University.
- (x) A candidate [employee or a research scholar {qualifying the criteria laid at Clause IV.1 (b) (i) or (ii) of the Ph.D. Ordinance}] of any other university/ institution/ college/ government department/ public sector undertaking/ R & D organization/ private industry, who is sponsored as a full-time candidate by the said organisation, with at least 3 years of experience, who shall work for his/her Ph. D. in his/her parent organization fulfilling the residency period requirement prescribed in Clauses VIII.3 (c) and (d) of the Ph.D. Ordinances.

Such candidates are required to submit a sponsorship and work experience certificate from the parent organization.

The non-degree awarding institutions, government departments, public sector undertakings, R & D organizations and the private industries are only those, which are recognized as centers of research by the University as specified in *Annexure – C* of the Ph.D. Ordinances of the University.

- (xi) A candidate occupying senior management position in a government department/ public sector undertaking/ R & D organization/ private institution/ private industry (of repute), which is not recognised as centre of research by the University, may be admitted to the Ph.D. programme with the approval of the Vice Chancellor provided he/she has at least 05 years of professional experience and is sponsored as a part-time candidate by the said organisation and the concerned DRC is convinced that the candidate can effectively pursue his/ her Ph.D. work in his/her parent organization fulfilling the residency period requirement prescribed in Clauses VIII.3 (c)- (e) of the Ph.D. ordinances of the University. The candidate is required to submit a sponsorship and work experience certificate from the parent organization.
- (xii) A candidate, working in an externally funded research project in the University as a research personnel, may be allowed to register for Ph.D. in the University provided he/she publishes at least one research paper in peer refereed journals after joining the project (out of the research work generated in the project) or he/ she gets short-listed in RET conducted by the University. Provided further that in such cases, the consent of the PI and the supervisor (in case PI is not the supervisor) is available to the effect that the research work of the Project and that of the Ph.D. are overlapping and/or working in both simultaneously will not hamper the interest of either.
- (xiii) A teacher of the University or of the constituent / affiliated colleges of the University holding substantive post (including those on probation)
- (xiv) A non-teaching employee of the University holding substantive post (including those on probation.)
- (xv) Candidates holding P.G. degree (D.M./M.Ch.) in super-specialty subjects in the Departments of Faculty of Medicine.

- (xvi) Candidates holding M.Phil. degree of the Banaras Hindu University [for enrollment in the Ph.D. programme in the same discipline only].

Candidates meeting any of the aforesaid provisions and other condition(s) prescribed under Section C (**MINIMUM ELIGIBILITY REQUIREMENTS FOR QUALIFYING EXAMINATION & PERCENTAGE OF MARKS**) are **not required to appear** in the RET of the concerned discipline/programme. However, all the exempted candidates must apply in the prescribed online Application Form in order to be eligible for consideration for admission. **The applications of the candidates belonging to the categories (iii) to (xiii) above should be routed through proper channel.**

### I. STRUCTURE OF RESEARCH ENTRANCE TEST (RET 2022)/ M.PHIL. ENTRANCE TEST 2022

#### I.1. FOR ADMISSION TO Ph.D. AN INTEGRATED M.Phil. PROGRAMME

RET will have two components:

- i) **Test A** will be based on Subject Knowledge, Assessment of Logical and Analytical Capability and Research Methodology.
- ii) **Test B will cover Personal Interview to test aptitude for research**

**(A) TEST – A** is aimed as to assess the subject knowledge of the candidate at the Master's level in the concerned subject and related area. It will also contain the questions on research methodology. The MCQs would be aimed to test the logical and analytical capabilities of the candidate, rather than memory power of candidates.

- a). 40% questions related to methodology will cover the following aspects : Foundation of Research, Problem identification and formulation, Research design, Qualitative and Quantitative Research, Measurement, Sampling, Data Analysis, Interpretation of Data, Paper Writing, Use of Encyclopedias and tools, etc. While other 60% questions would be of Master's level of the subject and areas concerned.
- b). This will have total 100 MCQs
- c). This test will have 120 minutes and 300 marks.
- d). Each question will carry 03 (three) marks for correct answer and 01 (one) mark will be deducted for a wrong answer.
- e). **Candidate must secure a minimum of 35% marks in Test A to be eligible for further consideration.**

#### **(B) Test – B will cover Personal Interview**

Candidate, approximately four times of the seats, based on merit, may be called for Test B.

All eligible RET-exempt category candidates shall have to take TEST-B of the selection process.

- a) The Test - B will be conducted in the concerned department/school/centre by a Board to be appointed for the purpose and will carry a total of 30 (thirty) marks for personal interview. The marks to be awarded to the candidates in the Personal Interview may not be below 9 and above 24. In case a candidate is awarded marks below 9 and above 24, detailed justifications may be noted by the interview committee in its proceedings against each such candidate.
- b) The Interview Board will ask questions relating to the area in which the candidate expects to undertake research, if selected, to test his/her competence for research in the discipline.
- c) A candidate applying in more than one discipline, will appear at Test B separately in each of the disciplines for which he/she has applied and shortlisted.

**The minimum qualifying marks for RET is 215 marks and RET – Exempted Category is 65 marks for admission in Ph.D.**

#### I. 2. FOR ADMISSION TO M.Phil. PROGRAMMES IN SUBALTERN STUDIES

M.Phil Entrance Test will have two components: Test A:

## RET Information Bulletin 2022

**TEST – A** is aimed as to assess the subject knowledge of the candidate at the Master’s level in the concerned subject and related area. It will also contain the questions on research methodology. The MCQs would be aimed to test the logical and analytical capabilities of the candidate, rather than memory power of candidates.

- a). First component will have 40% questions related to methodology will cover the following aspects : Foundation of Research, Problem identification and formulation, Research design, Qualitative and Quantitative Research, Measurement, Sampling, Data Analysis, Interpretation of Data, Paper Writing, Use of Encyclopedias and tools, etc. While second component will have 60% questions would be of Master’s level of the subject and areas concerned.
- b). This will have total 100 MCQs
- c). This test will have 120 minutes and 300 marks.
- d). Each question will carry 03 (three) marks for correct answer and 01 (one) mark will be deducted for a wrong answer.
- e). **Candidate must secure a minimum of 35% marks in Test A to be eligible for further consideration.**

### I.3 GENERAL CONDITIONS for RET/M.Phil. Entrance Test:

- (a) A candidate possessing the minimum qualifications with the requisite percentage of marks and academic record, as mentioned at Section B, shall be eligible to appear in the RET. In addition, a Senior Resident/Service Senior Resident of the Faculties of Medicine, Ayurveda and Dental Sciences shall also be eligible to appear in the RET, subject to fulfilling other eligibility conditions.
- (b) **There shall be negative marking at TEST.** Three marks shall be awarded for each correct answer, **while one mark shall be deducted for each incorrect answer.** Un-attempted questions shall be awarded zero marks.

### J. APPLICATION FORM AND APPLICATION PROCESSING/TEST FEE:

The University has created its Entrance Test Portal with the domain name [www.bhuonline.in](http://www.bhuonline.in). Its link is also available on the BHU website ([www.bhu.ac.in](http://www.bhu.ac.in)). The **RET/M.Phil. 2022 Information Bulletin and Application Form is available on the BHU website.** The entire process of making RET/M.Phil 2022 application for admission in various disciplines/programmes during the academic session 2022-23 has been made ONLINE. Accordingly, candidates may note that **RET/M.Phil 2022 Information Bulletin and Application Form** will not be sold (as there will be no offline mode) and the candidates desirous of admissions shall be required to register on the Entrance Test portal of BHU and fill up the application form ONLINE as per procedure provided on the Portal. **For further details visit the BHU website ([www.bhu.ac.in](http://www.bhu.ac.in)) or the entrance test portal of BHU ([www.bhuonline.in](http://www.bhuonline.in)).**

#### J.1 APPLICATION PROCESSING/TEST FEE

The Candidate desirous of applying for admission to Ph.D., Integrated M.Phil-Ph.D. or M.Phil programmes shall pay the following Application Processing Fee/Entrance Test fee:

Disciplines	Entrance Fee	
	SC/ST/PC	Others
All Disciplines/programmes (mentioned in this Bulletin)	Rs. 400.00	Rs. 800.00

**Note:**

- (i) **The Application Form once submitted with the Application Processing/ Entrance Test Fee at concessional rate meant for SC/ST/PC candidate shall be considered under SC/ST/PC Category.**
- (ii) **The Application Processing/ Entrance Test Fee paid shall neither be refunded nor transferred to another Disciplines and shall also not be reserved for any subsequent year, in any case.**

#### Mode of Payment of Application Processing/Test Fee

Candidate is required to fill up the RET 2022/ M.Phil. 2023 Application Form ONLINE as the printed Information Bulletin-cum-Application Form will not be sold by the University. After the candidate has filled up the application form

online, he/she will have to make **Online payment** of Application Processing/ Entrance Test Fee **through credit card/ debit card** through the payment gateway available on the Entrance test portal.

Further detailed procedure in this regard is prescribed in **Section K**.

### **K. INSTRUCTIONS FOR SUBMISSION OF APPLICATION FORM:**

#### **K.1 Online Application Form for the Applicants of RET/RET - Exempted -2022:**

The Application Form for RET/RET-Exempted 2022 is available on the BHU's entrance test portal ([www.bhuonline.in](http://www.bhuonline.in)). The online application making process will have following six stages:

**Step 1: Registration on the Portal [[www.bhuonline.in](http://www.bhuonline.in)]** - This step involves authentication of Candidate's email id and mobile number. As all important communications related to Entrance Test and Admission will be sent to the registered email id and mobile number, candidates are advised to give their correct email id/ mobile number (in use).

**Step 2: Filling up Identification details** - Only after successful registration on the Portal [[www.bhuonline.in](http://www.bhuonline.in)], the candidates would be required to fill up an Identification Form giving particulars of the documents for authentication of their identity. For the purposes, following photo identification documents are allowed: **(i) Aadhaar Card; (ii) Passport; (iii) Voter ID issued by the Election Commission of India; (iv) Bank Passbook affixed with the photograph (v) Driving License; (vi) Pan Card; (vii) any other valid Government ID Number and (viii) Admit Card issued by the concerned Boards.** Candidate should carefully write the correct spelling of their names as carried in their Aadhaar/identification document (as applicable). The candidates shall be compulsorily required to carry their identification document (as provided in the application process) to the examination centre, authentication of their identity, alongwith the Entrance Test Admit Card, failing which such candidate shall not be allowed in the examination hall.

**Step 3: Online Application Form Entry and Course Selection-** After successfully entering identification details, the candidates are required to fill-up details in the online application form and select the course after ensuring their eligibility for the concerned course in which they are desirous.

**Step 4: Uploading of photographs and signature-** Candidates have to scan their photo and signature as per instruction given in the portal and upload it.

**Step 5: Payment of Application Processing/ Entrance Test Fee-** After the candidate has filled up the application form online and clicks on the "CONFIRM" button, he/she will have to make the payment of application processing/test fee in online mode using **credit card/ debit card/net banking/etc. through the payment gateway available on the Entrance test portal.**

#### **NOTE:**

**The candidate is required to check the status of fee payment at BHU website ([www.bhuonline.in](http://www.bhuonline.in)) and if the status is 'OK', then only candidate will be able to take printout of Confirmation Page. In case, the fee payment status does not show the payment id/ OK status, the candidate is advised to act as follows:**

**(i) If the fee is paid through credit/debit card and status is not OK, it means the transaction is cancelled and the amount will, automatically, be refunded to concerned credit/debit card within 7 – 10 days. Therefore, such candidate has to pay the fee afresh and ensure the OK status within the last date for submission of online application form.**



## RET Information Bulletin 2022

**Step 6: Printout of Application Form for the record of candidates** - After online submission of application form and successful payment of Application Processing/ Test Fee, candidates are advised to take a printout of the online filled up application form (containing the details he/she has filled in and the transaction details of payment of application fee) from either the Entrance Test portal for their own record.

### NOTE:

1. The application form is to be filled up and submitted online with due care. Detailed instruction for filling up the application form, online payment of application fee and online submission is provided on the BHU's entrance test portal.
2. The RET Application Form shall be treated to have been successfully submitted after the candidate has paid the Application Processing Fee/ Entrance Test Fee only through the modes given above at Step 5.
3. After submission of the online application form the category change in any respect shall not be allowed in any case.

### K.2. ENTRANCE TEST CENTRES:

RET-2022 will be conducted in the Computer Based Test (CBT) modes only. The CBT would be conducted in 205 cities across the country.

S.No.	State	City						
1.	Andaman and Nicobar (1)	Port Blair						
2.	Andhra Pradesh (17)	Anantapur	Chirala	Chittoor	Gudur	Guntur		
		Kadapa	Kakinada	Kurnool	Madanapalle	Nellore		
		Ongole	Rajahmundry	Srikakulam	Tirupathi	Vijayawada		
		Visakhapatnam	Vizianagaram					
3.	Arunachal Pradesh (1)	Naharlagun						
4.	Assam (5)	Dibrugarh	Guwahati	Jorhat	Silchar	Tezpur		
5.	Bihar (12)	Arrah	Aurangabad	Bhagalpur	Bihar Sharif			
		Chhapra	Darbhanga	Gaya	Hajipur			
		Muzaffarpur	Patna	Purnea	Samastipur			
6.	Chandigarh (1)	Chandigarh						
7.	Chhattisgarh (5)	Bhilai Nagar	Bilaspur	Durg	Raipur	Rajnandgaon		
8.	New Delhi (1)	New Delhi						
9.	Goa (1)	Panaji						
10.	Gujarat (7)	Ahmedabad	Anand	Gandhi Nagar	Mehsana	Rajkot	Surat	Vadodara
11.	Haryana (9)	Ambala	Faridabad	Gurugram	Hisar	Karnal		
		Kurukshetra	Rohtak	Sonipat	Yamuna Nagar			
12.	Himachal Pradesh (5)	Bilaspur	Hamirpur	Kangra	Shimla	Solan		
13.	Jammu & Kashmir (3)	Jammu	Leh	Srinagar				

## RET Information Bulletin 2022

14.	<b>Jharkhand (5)</b>	Bokaro Steel City	Dhanbad	Hazaribagh	Jamshedpur	Ranchi
15.	<b>Karnataka (12)</b>	Bellary	Belagavi (Belgaum)	Bengaluru(Bangalore)	Bidar	
		Dharward	Hassan	Hubballi(Hubli)	Kalaburgi(Gulbarga)	
		Mangaluru	Mysuru (Mysore)	Shivamogga(Shimoga)	Udupi	
16.	<b>Kerala (8)</b>	Ernakulam	Kannur	Kollam	Kottayam	
		Kozhikode	Palakkad	Thiruvananthapuram	Thrissur	
17.	<b>Lakshadweep Island (01)</b>	Kavaratti				
18.	<b>Madhya Pradesh (10)</b>	Bhopal	Betul	Chindwara	Gwalior	Indore
		Jabalpur	Rewa	Sagar	Satna	Ujjain
19.	<b>Maharashtra (20)</b>	Amravati	Aurangabad	Chandrapur	Dhule	
		Jalgaon	Kolhapur	Latur	Mumbai	
		Nagpur	Nanded	Nashik	Navi Mumbai	
		Pune	Raigad	Ratnagiri	Sangli	
		Satara	Solapur	Thane	Wardha	
20.	<b>Meghalaya (1)</b>	Shillong				
21.	<b>Mizoram (1)</b>	Aizawal				
22.	<b>Nagaland (2)</b>	Dimapur	Kohima			
23.	<b>Odisha (7)</b>	Balasore	Berhampur-Ganjam	Bhubaneswar	Cuttack	
		Dhenkanal	Rourkela	Sambalpur		
24.	<b>Puducherry (1)</b>	Puducherry (Pondicherry)				
25.	<b>Punjab (9)</b>	Amritsar	Bhatinda	Jalandhar	Ludhiana	Mohali
		Pathankot	Patiala	Phagwara	Sangrur	
26.	<b>Rajasthan (9)</b>	Abu Road	Ajmer	Alwar	Bikaner	Jaipur
		Jodhpur	Kota	Sriganganagar	Udaipur	
27.	<b>Sikkim (1)</b>	Gangtok				
28.	<b>Tamil Nadu (10)</b>	Chennai	Coimbatore	Erode	Kanchipuram	Madurai
		Nagercoil	Salem	Thanjavur	Tiruchirappalli	Vellore
29.	<b>Telangana (4)</b>	Hyderabad	Karimnagar	Khammam	Warangal	
30.	<b>Tripura (1)</b>	Agartala				
31.	<b>Uttar Pradesh (19)</b>	Aligarh	Ayodhya (Faizabad)	Banda	Bareilly	Ghaziabad
		Gonda	Gorakhpur	Greater Noida	Jhansi	Kanpur
		Lucknow	Mathura	Meerut	Moradabad	Muzaffarnagar
		Noida	Prayagraj (Allahabad)	Sitapur	Varanasi	

## RET Information Bulletin 2022

32.	<b>Uttarakhand (4)</b>	Dehradun	Haldwani	Haridwar	Roorkee
33.	<b>West Bengal (8)</b>	Asansol	Burdwan	Durgapur	Hooghly
		Howrah	Kalyani	Kolkata	Siliguri

### IMPORTANT NOTE (For attention to all the applicants):

- (i) Tests A will be held in one sitting in the aforementioned Test Centres. Test B will be held in the concerned Department/School/Centre of BHU, Varanasi only. The Centre allotted will be indicated in the Admit Card.
- (ii) **The University reserves the right to cancel any of the Centres except Varanasi without assigning any reason.** Candidates should, therefore, choose the Centres in order of preference in their Application Forms.
- (iii) The Centre allotted will be indicated in the Admit Card. Applicants must note that the Examination Centre **once allotted to a candidate shall not be changed.**
- (iv) The final decision to allot a Centre to a candidate shall rest with the University.
- (v) **An outstation Centre can be cancelled due to inadequate number of candidates or due to any other reason. The candidate in such a case shall be allotted another Centre**
- (vi) Policy of allotment of Test Centre to candidates needing scribe is provided in **Section D 4** of the Information Bulletin.

**IMPORTANT NOTE:** Candidates may note that any change in the content of this Information Bulletin including Cancellation of Test Centre/Date of Conduct of Test. Notifications relating to Conduct of Test/ Display of Provisional Key etc. will be made on BHU Entrance Test Portal: ([www.bhuonline.in](http://www.bhuonline.in)) only. The candidates are therefore advised to regularly visit the said website for updates.

### L. REASONS FOR REJECTION OF THE APPLICATION FORMS:

- (i) Submission of application form without payment of requisite amount of Application Processing/ Entrance Test Fee.
- (ii) Any other inadequacy detected.

**NOTE:** If at any stage it is found that the applicant is not eligible for admission in a discipline under University rules, his/her candidature will automatically stand cancelled. Please note that thorough checking of Application Form, Minimum Eligibility requirements, Original documents in support of Academic Certificates and Categories-claimed will be done only at the time of admission/counseling (if called for the same). At that stage also the candidature of the applicant will stand cancelled, if he/she does not fulfill all the requirements for admission.

### M. IMPORTANT DATES:

Availability of RET/M.Phil./ Integrated M.Phil.-2022 ONLINE Form on the Entrance Test Portal for submission	:	10.05.2022
Last date for online submission of application forms of RET/M.Phil./Integrated M.Phil.-2022	:	31.05.2022
Online availability of admit Card (Downloading) for RET/M.Phil./Integrated M.Phil.-2022	:	One week before the date of examination
Date of Entrance Test of RET/M.Phil./Integrated M.Phil.-2022	:	25.06.2022

### M.1. SCHEDULE OF ENTRANCE TEST:

#### M.1.1. RET [FOR ADMISSION TO Ph.D. PROGRAMMES]

## RET Information Bulletin 2022

<b>TEST A</b>	:	25.06.2022
<b>TEST B</b>	:	Candidate(s) should visit the entrance test portal of the University ( <a href="http://www.bhuonline.in">www.bhuonline.in</a> ) regularly after 1 <sup>st</sup> week of July 2022 for the results of the RET, names of the shortlisted candidates in each discipline and date/time and venue of test.

### M.1.2. RET [FOR ADMISSION TO INTEGRATED M.PHIL-PH.D. PROGRAMME]

DAY, DATE AND TIME OF RET for INTEGRATED M.PHIL.-Ph.D. PROGRAMME		
<b>TEST A</b>	:	25.06.2022
<b>TEST B</b>	:	Candidate(s) should visit the entrance test portal of the University ( <a href="http://www.bhuonline.in">www.bhuonline.in</a> ) regularly after 1 <sup>st</sup> week of July 2022 for the results of the RET, names of the shortlisted candidates in each discipline and date/time and venue of test.

### M.1.3. M.PHIL ENTRANCE TEST [FOR ADMISSION TO M.PHIL PROGRAMMES]

DAY, DATE AND TIME OF M.Phil. ENTRANCE TEST		
<b>M.Phil.</b>		
<b>TEST A</b>	:	<b>25.06.2022</b>

## N. ADMIT CARD:

Candidates can download the ADMIT CARD from the BHU Entrance Test Portal ([www.bhuonline.in](http://www.bhuonline.in)) around **One week before the date of examination** providing the unique registration ID allotted to them at the time of online submission of application form. SMS alert on the mobile phone registered by the candidate regarding loading of Admit Card will also be sent. Therefore, the candidates are advised to give correct e-mail addresses/ mobile phone numbers for correspondence while filling up the online application form. If a candidate is unable to download the Admit Card, he/she should contact the Office of the Controller of Examinations, BHU, Varanasi on Help Desk Phone Nos. 0542-2368418; 6702696 and help desk email id. available on Entrance Test Portal.

2. The candidate should carefully examine the Admit Card received by him/her for all the entries made therein. In case of any discrepancy the candidate should inform the Office of the Controller of Examinations immediately. No consideration will be given, if discrepancies are not pointed out timely.

3. A passport size photograph be affixed (same passport size photograph which has been used for online submission) in the space provided on the printout of the Admit Card under self-attestation.

### NOTE:

- (i) The Tests shall be held on 25<sup>th</sup> June 2022 Schedule of Test and Venue details will be given on the Admit Card.
- (ii) No candidate shall be allowed to appear in the Test without a valid Admit Card.
- (iii) **The candidate is required to retain the Admit Card in safe custody after the Test for presenting it before the Admission Committee, if called for counseling.**
- (iv) In all matters relating to RET/M.Phil. Test and admission to respective disciplines, the decision of the University shall be final and binding.



**O. DURATION OF TEST AND STRUCTURE OF QUESTION PAPER:**

The structure of Question Paper shall be as follows:

It shall be of 120 minutes duration carrying 300 marks containing 100 multiple choice questions on Assessment of Logical and Analytical Capability.

**P. METHOD OF ANSWERING IN THE TEST:**

**Instructions for Computer Based Test (CBT)**

- (i) **The CBT requires the candidate to sit on an allocated computer terminal (node) according to his/her Roll Number on the Admit Card at the allotted Test Centre.** After due verification at the Test Centre, a computer terminal (node) indicating roll number will be allocated to each candidate. Candidates should find and sit on their allocated computers only.
- (ii) Candidates would be required to login in the computer terminal using the login-ID and password given to them. The computer terminal allotted to the candidate will display WELCOME login screen, Candidate's photograph and Course Name and Course Code opted by the candidate.
- (iii) After login, the candidate shall be able to see the detailed instructions for the examination. Candidates are advised to go through the instructions carefully regarding the type of questions and marking scheme. At the designated time of start of the Test, the candidates will be able to proceed and see the questions on the computer screen.

(iv) **Procedure for answering questions:**

For each question candidates will get four alternatives of answer. One of them would be correct. The candidate would be required to mark the correct option as Answer. Below each question and its Answer Options **Four (04) buttons** titled as **"SAVE AND NEXT"**, **"SAVE AND MARKED FOR REVIEW"**, **"CLEAR RESPONSE"** AND **"MARKED FOR REVIEW"** will be available. **Two additional buttons** titled as **"BACK"** and **"NEXT"** are available using which the candidate may proceed to next question or go back to previous question as desired.

- a) In case a candidate is certain about the correct answer to a question, he/she will select the right option by clicking in the space provided for the purpose and thereafter SAVE the Answer by clicking **"SAVE & NEXT" button.**
  - b) **Candidate may also click "SAVE AND MARKED FOR REVIEW" button, if he/she intends to review the answer later. Only those questions which are finally saved will be considered for evaluation. In case answer is not saved by the candidate the same will not be evaluated.**
  - c) In case a candidate is not certain about the correct answer to a question and intends to revisit the question later, he/she may click **"MARKED FOR REVIEW" button or "SAVE AND MARKED FOR REVIEW" button. In either of these cases, the question will not be evaluated as the answer has not been unconditionally saved.**
  - d) In case a candidate intends to change the previously saved answer of any question, he/she should **first** select the corresponding question from the Question Palette **and then click "CLEAR RESPONSE" button. Thereafter, he/she may click the desired option followed by clicking "SAVE & NEXT" button.**
  - e) **In case a candidate intends to skip a question, he/she may do so by clicking "NEXT" button. It may be noted that "BACK" and "NEXT" buttons are available using which the candidate may move to next question or go back to previous question, as desired.**
- (v) The on-screen computer clock counter of every candidate will be set at the server. The countdown timer in the top right side of computer screen will display the time remaining (in minutes) available for the candidate to

## RET Information Bulletin 2022

---

complete the Test. When the timer reaches zero, the examination will end by itself. Candidate will not be required to end or submit the Test.

The Question Palette displayed on the right side of screen will show the status of each question.

- (vi) Blank Sheets for doing rough work/calculations shall be provided to the candidates. The Blanks Sheets would have a Header page for the candidates to write down his/her Name and Roll Number. All calculations/writing work are to be done only in the Blank Sheets provided at the Centre in the examination Room/Hall and on completion of the test candidates must hand over the rough sheets to the invigilator on duty in the Room/Hall.
- (vii) A sample/mock test will be available on bhuonline.in website from June 10, 2022 for practice purpose and to give the candidate look and feel of the Computer Based Test. A detailed manual for familiarizing the candidates with the conduct of Entrance Test in CBT mode is available on BHU Entrance Test Portal (bhuonline.in).

**NOTE:** Notwithstanding anything to the contrary contained anywhere in the ordinances of the University, no scrutiny/ revaluation of the answer book of the test shall be allowed on any ground. Further, no representation or any enquiry regarding the conduct of the test shall be entertained.

### P.1 EVALUATION AND RESULT

There shall be negative marking in entrance tests for all disciplines in RET/MPhil. Three marks shall be awarded for each correct answer while one mark shall be deducted for each incorrect answer. Unattempted question will be awarded zero mark.

Candidate shall be selected in order of merit on the basis of aggregate marks secured in the Entrance Test provided he/she fulfils the minimum eligibility criteria and minimum qualifying marks in the test. **The minimum qualifying marks for the Research Entrance Test has been fixed as 35% for all categories.**

### P.2. PROCEDURE FOR CHALLENGING THE QUESTIONS/PROVISIONAL ANSWER KEYS:

Computer Based Test Mode, the question paper of the candidate, answer marked by him/her and the provisional answer key will be uploaded on BHU's entrance test portal (www.bhuonline.in) within 02 to 03 days of the date of conduct of Test. The candidate can login the portal and see the provisional answer key. The facility to challenge the provisional Answer Key and questions shall be available for 02 days from the date of upload of answer key. The Candidates will be required to pay online a sum of Rs.100/- (one hundred only) as Processing Fee for each question/answer key challenged. The payment of the Processing Fee may be made through online only (Debit/Credit Card/ Net Banking). The Processing Fee will be refunded online in the same account (Debit/Credit Card/Net Banking), if the challenge is found correct. No challenge will be entertained through email/offline modes and without receipt of Processing Fee. The challenges made by the candidates will be reviewed by the subject matter Experts of the University. Accordingly, the final evaluation will be done with key so finalized by the experts and no request for review will be entertained thereafter. The decision of the experts of the University regarding Question(s)/ Key will be final.

### Q. IMPORTANT INSTRUCTIONS TO CANDIDATES APPEARING IN RET/M.Phil. TEST:

- (i) **Please check the Admit Card carefully for your Name, Gender, Category, Photograph, Signature, Course name, Course Code, etc. In case of any discrepancy, immediately contact the RET Section of the Office of the Controller of Examinations, BHU for necessary action but not later than 05 days from the issue of Admit Card.**
- (ii) **After submission of the online application form the category change shall not be allowed.**
- (iii) The candidates shall be compulsorily required to carry their identification document (as provided in the application process) to the examination centre, for authentication of their identity, along with the Entrance Test Admit Card, failing which such candidate shall not be allowed in the examination hall.

- (iv) **No Candidate will be allowed** entry to the Test Hall **after** the start of the Entrance Test. The candidates are required to follow the instruction given in the Admit Card in this regard.
- (v) The test will start exactly at the time mentioned in the Admit Card and an announcement to this effect will be made by the Centre Superintendent/invigilator.
- (vi) A particular computer will be allotted to every candidate in CBT Mode. Candidate should find out and occupy their allotted computer only. Any candidate found to have changed room or the computer on his/her own other than allotted, his/her candidature shall be cancelled and no plea would be accepted for it.
- (vii) No Candidate will be allowed to carry any baggage inside the Examination Centre. The University will not be responsible for any belongings stolen or lost at the premises.
- (viii) **No Candidate shall be allowed** to leave the Test Hall **till the end** of the Test.
- (ix) There is no provision to provide or permit a ‘writer’ in the Entrance Test except for blind candidates, who will be provided ‘writers’ on request [for details please refer to **Section 5 (iv)** of this Information Bulletin].
- (x) The Candidates shall be checked for any resource materials frequently and at random by the Invigilators and other staff conducting the Test, routinely and also on the slightest doubt.
- (xi) **Calculators/watch calculators, electronic diary, pager, mobile phones, earphones, alarm clock, digital watches with memory, slide rule, etc. are not allowed in the examination hall. Also, carrying of licensed weapons, fire arms, tools which can be used as lethal weapons are not allowed in the examination hall.**
- (xii) **The Entrance Examination of a candidate shall be cancelled in case of any of the following actions by a candidate:**  
Relevant or irrelevant resource material or loose paper found on his/her possession, or, lying on or around his/her seat, Possession of any unauthorized instrument or equipment as mentioned at (vi) above/document/paper/ information materials or any resource materials, Communication of information in writing or verbally or exchange of Question Booklet/Answer Sheets to and from any other person during the Test period and any other malpractice amounting to obtaining undue advantage, Writing anything in the Admit Card, Carrying of the envelope of the Admit Card into the examination hall, Any alterations or corrections in the entries made by a candidate in Question Booklet and OMR Sheet [Roll Number in words & figures and OMR sheet no. in Question Booklet and Roll Number, Question Booklet no. and Set no. (if any) in OMR sheet] but not duly verified by the invigilator concerned, Non-matching of signature made at the time of Entrance Test with that already done at the time of filling of Application Form.
- (xiii) **The Entrance Examination of a candidate shall be cancelled and candidate shall be debarred to appear from future Entrance Tests in case of any of the following actions by a candidate:**  
Tampering with the Admit Card including that of the photograph, Face not resembling the photograph on the Admit Card, Not occupying the allotted seat, Tampering/disturbing the seating arrangements, Smuggling-out or smuggling-in Question Booklet in part or in full, or Test material, or any resource material connected with the Test, Making any attempt to influence the University authorities directly or indirectly, disturbing or trying to disturb the Entrance Test, Noting down the questions or their answers, Shouting of slogans or creating unruly scene at the examination hall/examination centre/University campus.
- (xiv) **Impersonation is a legally punishable offence.** No Candidate will be permitted to appear in the Test without a valid Admit Card. The Admit Card should be presented to the invigilators/other authorized officials for verification. The candidate’s identity will be verified in respect of his/her details on the Admit Card. If the identity is in doubt, the candidate may not be allowed to appear in the Test. The authorities may at their discretion **provisionally** permit the candidate to appear in the Test after completing formalities including taking of thumb impression/several signatures for further verification. No extra time will be granted for these formalities to be completed.  
Similarly, at the time of Counseling, the candidate’s identity will be verified from the documents available

with the University and in case of any doubt, his/her admission will be deferred till final verification.

A person found to impersonate a candidate shall be handed over to the Police under an FIR lodged by the University. The **candidate in reference shall be debarred from future Entrance Tests of the University.**

A student or employee of the University if found to impersonate in the Entrance Test will be respectively **rusticated or dismissed from the University service.**

- (xv) **Suppression/concealment of information:** The candidate must ensure that he/she is qualified to appear in the Entrance Test. If it is detected at any stage that he/she did not fulfill the minimum qualifications, or, there was something against the candidate which would have prevented him/her from being admitted in the concerned subject/course, or, the candidate has provided false information or no information about his/her previous involvement in an act punishable under law or act of gross misconduct and indiscipline, then his/her candidature shall not be considered and his/her admission, if already made, shall be cancelled at any stage and he/she shall be debarred from appearing in any of the future Entrance Tests of the University.
- (xvi) Nobody other than the University authorized personnel is permitted to move around the Test venue. Any unauthorized person loitering around the Test venue shall be handed over to the police under an FIR lodged by the University.
- (xvii) **No scrutiny/re-evaluation of answer sheet of RET is allowed in any case at any stage.**
- (xviii) The candidate shall be bound by the BHU Statutes/Ordinances/Rules and Regulations framed from time to time.
- (xix) Any litigation in respect of the RET shall be subject to the jurisdiction of the local Court of Varanasi and/or Hon'ble High Court of Judicature at Allahabad only.
- (xx) **For any interpretational difficulties, the interpretation through English language shall be deemed as correct.**

### **R. ADMISSION:**

The admission of a candidate in a research discipline will be done only when he/she satisfies all the eligibility requirements, appears in the RET test, qualifies in the Entrance Test and completes all formalities required for admission in the discipline. The admissions shall be made strictly on the basis of merit index in the RET availability of seats in the course, as per rules given in this Information Bulletin and rules framed by the University from time to time.

#### **Counselling Procedure on the Counselling Date:**

**The University will follow computerised counselling procedure for admissions to various courses during the academic session 2022-23. The counselling procedure will involve following steps:**

##### **R.1.1. Attendance of candidates present:**

Every candidate called for counseling for admission to a Course shall be required to reach the counseling venue at the prescribed time/date given in this Call letter. Contact the Counseling Centre/Venue Incharge and mark your attendance by signing the attendance sheet available with the Counseling Centre Incharge.

##### **R.1.2. Verification of academic records of the candidates present:**

The Admission Committee (Teachers-counsellors) available at the Counselling Centre/Venue verifies the original documents of the candidates present on the date of Counselling. Subsequently, the concerned Admission Committee is required to verify the academic records on the Verification page of the online admission portal, filled in by the candidate at the time of submitting his/her application form *vis-a-vis* original documents to be made available by the candidates at the time of counselling. In case the academic records filled by the candidate are correct, the Admission Committee needs to put a tick mark on the appropriate box. In case of any correction, there is provision for correction on the verification page.

##### **R.1.3. Conduction of Test – B of the candidates present:**



## RET Information Bulletin 2022

---

- (i) Thereafter the **Test B** will be conducted in the concerned department/school/centre by the Department which carries a total of 30 marks for personal interview.
- (ii) The Interview Board will ask questions relating to the area in which the candidate expects to undertake research, if selected, to test his/her scholastic competence for research in the discipline.
- (iii) A candidate applying in more than one discipline will appear at Test B separately in each of the disciplines in which he/she has applied and qualified. The dates for Test B may be suitably adjusted/staggered in different disciplines.

### R.1.4 FINAL MERIT ORDER AFTER TEST-B:

- a. For candidates of RET category, final merit order shall be based on the composite index prepared by adding marks obtained by a candidate in Test A and Test B and Academic Record (**calculated as per formula given in Section C of this Information Bulletin**).
- b. For candidates of RET (Exempted) category, final merit order shall be based on the composite index prepared by adding marks obtained by a candidate in Test B and Academic Record (**calculated as per formula given in Section C of this Information Bulletin**).
- c. Separate Merit orders of RET and RET-Exempted candidates shall be prepared by the Interview Board for the discipline.

### R.1.5 ADMISSION PROCESS

#### R.1.5.1. DECLARATION OF RESULTS

- a. Names of as many RET candidates as the number of vacancies given in the Information Bulletin will be announced on the basis of final merit order prepared in accordance with clause Q.1.1 to Q.1.4 above. An equal number of wait-listed candidates (in order of merit) will also be prepared for consideration in case seats remain vacant.
- b. Names of all RET-Exempted candidates who are declared qualified after Test B will be separately announced in the Merit Order.

#### R.1.5.2. ADMISSION, ALLOTMENT OF Ph.D. SUPERVISOR AND PAYMENT OF FEE

- a. For those qualifying under the RET category, the maximum number will ordinarily be restricted to the number of vacancies announced in the RET bulletin.
- b. Based on the final merit order, offer of admission will be issued to the RET/RET (Exempted) selected candidates by the Head of the Department/Coordinator of the School/Centre prescribing therein the last date of depositing the fee.
- c. Based on the final merit order, the concerned Admission Committee **would release/ publish the RET -2022 and RET – Exempted – 2022 merit list of the candidates who are declared qualified for the said disciplines**. The candidates may be advised to see the course allocation page on their portal on the counseling day and thereafter. In case a candidate is offered provisional admission, he/she must make payment of the admission fee before the deadline of fee payment given in the course allocation page of the portal failing which **he/she shall forfeit his/her claim for the provisional admission** and the said offer of admission will stand withdrawn.
- d. **The RET and RET – Exempted candidate must secure a composite index of at least 215/65 to be eligible for Ph.D. registration in the discipline. However, meeting the said minimum composite index requirement will not guarantee registration for Ph.D.**

#### Payment of Fee:

**Online payment** (through Debit Card/Credit Card/Net banking) through the payment gateway available on the Portal.

#### NOTE

- (i) For online payment, the candidate must visit Course Allocation page and make the payment through debit/credit card, etc.

## RET Information Bulletin 2022

---

- (ii) To secure admission in the course for which the candidate is provisionally offered he/she should **pay the prescribed Admission Fee within the deadline for payment of admission fee as mentioned in the offer of admission (shown on the Course Allocation page) within the deadline mentioned in the offer letter.**
- (iii) **A candidate will be treated as provisionally admitted in the course offered only after the prescribed fee has been paid by him/her. On successful payment of prescribed admission fee, the payment ID will appear in the 'Application' page of the candidate's portal as well as in the admitted list available on the admission committee site of the portal.** Further, the provisional admission of the candidate to the concerned programme shall be subject to such Ordinances, Rules and Regulations as may be framed from time to time by the University.
- (iv) However, if a candidate, on declaration of final merit list by various departments, stands selected for admission in more than one discipline, he/she shall be allowed to take admission in only one of the disciplines based on his/ her choice/ preference and merit in the discipline.
- (v) Candidates can download the Admission letter from their portals only after the admissions are over in the concerned discipline or they have locked their allotment after any round of declaration of admission list. The admission letter will contain the date on which they have to report to the concerned Department/Centre/School for their Ph.D. program along with the required documents.

### Allotment of Supervisor:

- (i) The Department(s) ought to clearly display the number of vacancy(ies) (as mentioned in the RET Information Bulletin 2022) and area of specialization of the teachers under whom the vacancy(ies) exists. The allotment of Supervisor will be done by the concerned DRC/CRC/SRC for those who have secured admission by depositing the admission fee. Thereafter, the DRC/CRC/SRC may call the Ph.D. student, in order of merit, and allow him/her to choose his/her supervisor according to his/her preference subject to availability of vacancy under different supervisor(s). Further, the said DRC/CRC/SRC will formally allot a Ph.D. Supervisor, [and Co-Supervisor(s), if required], for the selected/allotted candidates on his/her proposed research topic.

**Note: Those RET/RET (Exempted) candidates who obtained a composite merit index of 215/65 and above but could not register in the July term, may be considered, subject to availability of vacancy, in the next January term. However, they will have to appear at the Test B again.**

### R.2. ADMISSION IN INTEGRATED M.PHIL. PROGRAMME IN: (I) ENVIRONMENT & SUSTAINABLE DEVELOPMENT; AND M.Phil. PROGRAMME – SUBALTERN STUDIES:

- a) Final merit order (of all such candidates who qualify Test A) shall be based on the sum of marks obtained by candidates in the Test-A and Test-B in Integrated M.Phil. Programme – Environment & Sustainable Development.
- b) Admission shall be offered in order of final merit drawn in the aforesaid manner.
- c) The admission in M.Phil program in Subaltern Studies will be done in order of merit of RET 2022.

### S. REGISTRATION OF FOREIGN NATIONALS:

Applications of Foreign Nationals nominated by the Govt. of India under scholarship scheme and self-financing Foreign Nationals shall be entertained. The foreign nationals **need not appear in the entrance test** for admission. However, they should have passed *the equivalent Qualifying Examination from an Indian or Foreign University / Institution.*

Provision to the extent of 15% of the total Vacancies in each Discipline on supernumerary basis for Foreign Nationals is available: Out of which 5% Vacancies be filled up by children of NRIs [Persons of Indian Origin (PIO)] and 5% by children of Indian workers in Gulf and South Asian Countries. All the foreign nationals have to fulfill the following conditions:

#### i). At the time of submitting the application

- (i) All the foreign nationals should submit their applications, along with the **processing fee**, on prescribed format, which can be freely downloaded from the website [www.bhu.ac.in](http://www.bhu.ac.in).
- (ii) The applications of scholarship-holding Foreign Nationals (under various schemes) are routed through the Indian Council for Cultural Relations/Ministry of Human Resource Development (Department of Education), Govt. of India, New Delhi.
- (iii) They should hold a valid foreign passport.
- (iv) The antecedents of the candidate have been verified by the forwarding Agencies/Ministry and found in order.
- (v) They should have adequate knowledge of English and/or Hindi as per the requirements of the Course.

### ii). At the time of admission

- (i) As per revised guidelines/ instructions of the Department of Higher education, MHRD, GOI on grant of research visa, the foreigners who desire to undertake research in India, should therefore, apply to the concerned Indian Missions abroad with the brief synopsis of the research project to be undertaken in India, the details of places to be visited, previous visits, whether the scholar has secured admission into a recognized or reputed institution and evidence of financial resources.
- (ii) They have valid Residential permit in India granted for studies/Student Visa for the prescribed duration of the concerned Course.
- (iii) They fulfill the minimum eligibility requirements.

### IMPORTANT NOTE:

- (i) English Proficiency certificate of TOEFL (minimum 70 marks) or IELTS (minimum 6 bands) score is mandatory for foreign candidates at the time of submission of application form for the admission in the University. If the candidate is unable to provide any of these scores/certificate or English Proficiency certificate then the candidate will be asked to appear in the English Proficiency test to be conducted by Office of the Controller of Examinations. He/she has to clear Intermediate level course and need an overall minimum score of 40% to confirm admission.
- (ii) The aforesaid provision may be relaxed for candidates having nationality of English speaking countries or who have passed their qualifying degree from the Institution with English as medium of instruction.

### iii). General

- (i) The Degrees/Certificates of the candidates have been recognized and approved by the Association of Indian Universities (AIU)/Commonwealth Universities/International Association of Universities (IAU) as equivalent to the corresponding Indian Degrees/Certificates.
- (ii) All the eligible foreign nationals are required to fill up the Registration Form prescribed by the University at the time of admission.
- (iii) The *inter-se* merit among the applicants of various foreign nationals will be decided by the “Core Committee for Admissions of Foreign Nationals”, which shall be deemed as final.

Further details regarding admission of foreign nationals are available on the website [www.bhu.ac.in](http://www.bhu.ac.in) which is updated periodically.

**The applications should be submitted to the INTERNATIONAL STUDENTS CENTRE, C/3/3 TAGORE HOUSE, BANARAS HINDU UNIVERSITY, VARANASI - 221005, INDIA on or before the last date as notified by the International Students Centre.**

### FEE FOR THE FOREIGN NATIONALS:

Fee structure for all the categories of foreign nationals is as under (Fee details available on website)

1. Processing fee (50 / 100 US \$) : At the time of submitting the application
2. Usual Course fee (in INR) : At the time of joining the course

## RET Information Bulletin 2022

---

3. Additional fee (US \$) : At the time of joining the course

The quantum of processing fee and additional fee may be modified by BHU from time to time.

### **T. FELLOWSHIP:**

All the eligible internal full-time research scholars (admitted through RET) not getting any financial assistance from any funding agency may be provided fellowship for his/her full residential period (maximum three+one years as per Ph. D. Ordinance). However, the extended period of fellowship (fourth year) shall be subject to submission of evaluation report after three years through the Research Programme Committee (RPC) and Departmental Research Committee (DRC) to be finally approved by the Vice-Chancellor. Further, a research scholar earlier admitted under RET exempted category (NET-LS/GATE only) could be extended BHU research fellowship subsequently, subject to fulfillment of certain conditions prescribed in the Ph.D. Ordinances.

### **Important Note:**

The students who would be assigned to register themselves for Ph.D. in the Colleges admitted to the privileges of the University would have to carry out their research work in the concerned college only. Their fees shall be deposited in the concerned college. The concerned College shall be liable for payment of all kinds of fellowships to students registered with them and the Banaras Hindu University will not provide any fellowship or hostel or medical or library facility to those registered for Ph.D. in Colleges admitted to the privileges of the University.

---

## RET Information Bulletin 2022

### APPENDIX – 1 : LIST OF ALLIED SUBJECTS FOR REGISTRATION IN DIFFERENT DISCIPLINES

LIST OF ALLIED SUBJECTS FOR REGISTRATION IN DIFFERENT DISCIPLINES If the candidate possesses PG degree in a discipline listed in column (2), titled as “Allied Subject(s)”, and RET is not being conducted in the discipline of his/her PG degree, then he/she shall opt for the corresponding main discipline in which RET shall be held. Accordingly, he/she shall be eligible to be considered for admission to the corresponding main discipline and such other allied disciplines to the main discipline (in which he/she appears for the RET) is an allied discipline (as detailed at Section B of this Information Bulletin).

Main Discipline (1)	Allied Subject(s) (2)
<b>FACULTY OF ARTS</b>	
Arabic	.
English	Translation Studies, Cultural Studies, Comperative Studies
Foreign Languages	
Chinese	-
Russian	-
Indian Languages	-
Tamil	-
Nepali	-
Kannada	-
Hindi	
Prayojan Moolak Hindi	
Linguistics	Foreignism Science
Pali & Buddhist Studies	-
Persian	-
Sanskrit	-
Urdu	-
Ancient Indian History, Culture & Archaeology	-
History of Art	Heritage Management
Tourism Management	Heritage Management, Tourism Administration, Tourism & Travel Management
Indian Philosophy & Religion	-
Journalism & Mass Communication	Corporate Communication Management
Museology	-
Physical Education.	Sports Biomechanics, Exercise Physiology, Sports Psychology
Library & Information Science	-
Mathematics	-
Statistics	-
<b>FACULTY OF SOCIAL SCIENCES</b>	
Economics	-
History	-
Political Science	-
Psychology	Applied Psychology, Cognitive Science, Clinical/Counseling Psychology, Rehabilitation Psychology
Sociology	Sociology
Social work	-
Public Administration	-
Subaltern Studies	-
Women's Studies	-
Nepal Studies	-
Peace Research	Gender Studies, Science
<b>FACULTY OF VISUAL ARTS</b>	
Applied Arts	
Pottery & Ceramics	
Plastic Arts	History of Visual Arts & Design
Textile Design	
Painting	



## RET Information Bulletin 2022

<b>FACULTY OF SANSKRIT VIDYA DHARM VIGYAN</b>	
Agam Tantra	Nyaya Darshan, Dharm Darshan
Veda (Shukla Yajurveda, Krishna Yajurveda, Samveda Rigveda,)	-
Vyākaran	-
Jyotish (Ganit & Falit)	Agricultural Sciences
Dharma Shastra	-
Mimānsa	-
Sahitya	-
Jain Darshan Bauddh Darshan	Dharma and Darshan, Indian History & Culture, Jain Vidya, Prakrit Bhasha & Sahitya, Bhasha & Sahitya,
Dharmāgam	-
Vaidic Darshan	-
Vedanta	-
Sānkhyayoga	Nyaya
Nyāya Vaisheshik	-
Prachin Nyaya	-
Puranetihas	-
Dharm Vijnana	Vedant Darshan
<b>FACULTY OF SCIENCE</b>	
Biochemistry	-
Biotechnology	-
Botany	Life Science (Plant Science),
Chemistry	Applied Chemistry, Environmental Chemistry, Industrial Chemistry, Pharmaceutical Chemistry/Forensic Science
Computer Science	-
Geography	Urban & Rural Development and Planning,
Geophysics	Meteorology/Atmospheric Science/Climatology
Geology	Marine Geology, Oceanography, Archaeology
Psychology	Applied Psychology, Cognitive Science, Clinical/Counseling Psychology, Rehabilitation Psychology
Petroleum Geosciences	-
Mathematics	Theoretical Computer Science, Mathematical Physics and Astronomy, Computational Biology, Econometric & Finance
Molecular and Human Genetics	Life Science, Molecular Biology
Physics	Electronics, Material Science, Astrophysics (including space and atmospheric physics)
Statistics	-
Applied Microbiology	-
Environmental Science	Life Science (Plant Science)
Zoology	Animal Biotechnology, Life Sciences, Neuroscience
Human and Clinical Genetics (in Centre for Genetic Disorders)	-
Mathematical Sciences	-
Bioinformatics	Computational Biology, Computational and Integrative Sciences, System Biology
<b>FACULTY OF MEDICINE</b>	
Anatomy	-
Biochemistry	Life Sciences, Forensic Science, MD/MS
Biophysics	-
Cardiology	Cytogenetics, Human Genetics
Cardiothoracic Surgery	Nursing, Perfusion Technology
Dermatology & Venereology*	-
Endocrinology & Metabolism	-
Forensic Medicine	Forensic Science, Pharmacy, Chemical Engineering, Dental Medicine, Computer Engineering

## RET Information Bulletin 2022

	Genetics, Biology,
<b>Geriatric Medicine</b>	Life Sciences, Medical Sciences (Modern)
<b>General Surgery</b>	M.Sc. Nursing
<b>Medicine</b>	-
<b>Microbiology</b>	Life Sciences
<b>Molecular Biology</b>	Medical Biochemistry
<b>Nephrology</b>	Nutrition Sciences,
<b>Neurology</b>	Occupational Therapy/Physiotherapy
<b>Obstetrics &amp; Gynecology</b>	Oncology, Genetics, Nursing
<b>Orthopedics</b>	Genetics, Chemical Engineering, Nursing, Master of Physiotherapy/Occupational therapy/Naturopathy/Yoga
<b>Otolaryngology (E.N.T.)</b>	Audiology, Biostatistics
<b>Pathology</b>	-
<b>Pediatrics*</b>	Applied Psychology, Child Psychology, Clinical and Counselling Psychology, Social Psychology
<b>Pediatrics Surgery</b>	MDS(Oral-Maxillofacial surgery)
<b>Pharmacology</b>	Parpaceutical Analysis
<b>Physiology</b>	Life Science and Human Clinical Physiology
<b>Community Medicine</b>	Biostatistics, Public Health
<b>Psychiatry</b>	Psychiatry Social Work, M.Phil. in Clinical Psychology, M.A./M.Sc. Psychology with paper in clinical Psychology, M.Sc. Nursing
<b>Radiotherapy &amp; Radiation Medicine</b>	Medical Physics, Biomedical Engineering,
<b>Radiodiagnosis &amp; Imaging</b>	Biomedical Engineering, Surgical Science, Modern Medicine
<b>Surgical Oncology</b>	Life Sciences, Social Sciences, Medical Science including Ayurveda, Science, Technology, Engineering & Mathematical Sciences (STEM)
<b>Health Statistics</b>	Biostatistics
<b>FACULTY OF DENTAL SCIENCES</b>	
<b>Dental Sciences</b>	-
<b>FACULTY OF AYURVEDA</b>	
<b>Siddhanta Darshan (formerly known as Basic Principles)</b>	-
<b>Samhitā &amp; Sanskrit (formerly known as Āyurveda Samhitā)</b>	Ayurveda Siddantha
<b>Panchakarma</b>	Yoga & Naturopathy, Rog Nidan Evam Vikriti Vigyan
<b>Prasuti Tantra</b>	Ayush PG
<b>Dravyaguna</b>	M. Pharma
<b>Rasa Shāstra</b>	Pharmaceutics, MBA
<b>Rachana Sharir</b>	-
<b>Medicinal Chemistry</b>	Pharmaceutical Science
<b>Kāyachikitsā</b>	Yogic Sciences, Life Science
<b>Kriya Sharir</b>	M.Sc. in Yoga
<b>Swasthavritta &amp; Yoga</b>	Yoga
<b>Kaumarbhritya/Balroga</b>	Clinical Psychology
<b>Vikrit Vigyan</b>	Yogic Sciences
<b>Sangyahan</b>	Yoga (Yoga Science/Yogic Science/Yoga & Naturopathy/Yoga & Science of Living), Sanskrit evam Veda
<b>Shalya Tantra</b>	-
<b>Shalakya Tantra</b>	M.Pharma (Ayurveda)
<b>Agad Tantra</b>	Entomology & Agricultural Zoology, Food Science & Technology
<b>FACULTY OF ENVIRONMENT &amp; SUSTAINABLE DEVELOPMENT</b>	
<b>Environmental Sciences (IESD)</b>	Life Sciences, Earth & Atmospheric Sciences, Physical Sciences, Mathematical Sciences, Horticulture Science, Engineering & Technology

\*\*\*\*\*